

Research article

Patients' demographic and clinical characteristics and level of care associated with lost to follow-up and mortality in adult patients on first-line ART in Nigerian hospitals

Solomon Odafe^{§,1}, Ochanya Idoko¹, Titilope Badru¹, Bolatito Aiyenigba¹, Chiho Suzuki², Hadiza Khamofu¹, Obinna Onyekwena³, Emeka Okechukwu⁴, Kwasi Torpey¹ and Otto N Chabikuli^{1,5}

[§]**Corresponding author:** Solomon Odafe, FHI360 Country Office, Department of Medical Services, Godab Plaza, Plot 1071, J.S. Tarka Street, Area 3, Garki, Abuja, Nigeria. (sfodafe@gmail.com)

Abstract

Introduction: Clinical outcome is an important determinant of programme success. This study aims to evaluate patients' baseline characteristics as well as level of care associated with lost to follow-up (LTFU) and mortality of patients on antiretroviral treatment (ART).

Methods: Retrospective cohort study using routine service data of adult patients initiated on ART in 2007 in 10 selected hospitals in Nigeria. We captured data using an electronic medical record system and analyzed using Stata. Outcome measures were probability of being alive and retained in care at 12, 24 and 36 months on ART. Potential predictors associated with time to mortality and time to LTFU were assessed using competing risks regression models.

Results: After 12 months on therapy, 85% of patients were alive and on ART. Survival decreased to 81.2% and 76.1% at 24 and 36 months, respectively. Median CD4 count for patients at ART start, 12, 18 and 24 months were 152 (interquartile range, IQR: 75 to 242), 312 (IQR: 194 to 450), 344 (IQR: 227 to 501) and 372 (IQR: 246 to 517) cells/ μ l, respectively. Competing risk regression showed that patients' baseline characteristics significantly associated with LTFU were male (adjusted sub-hazard ratio, sHR = 1.24 [95% CI: 1.08 to 1.42]), ambulatory functional status (adjusted sHR = 1.25 [95% CI: 1.01 to 1.54]), World Health Organization (WHO) clinical Stage II (adjusted sHR = 1.31 [95% CI: 1.08 to 1.59]) and care in a secondary site (adjusted sHR = 0.76 [95% CI: 0.66 to 0.87]). Those associated with mortality include CD4 count < 50 cells/ μ l (adjusted sHR = 2.84 [95% CI: 1.20 to 6.71]), WHO clinical Stage III (adjusted sHR = 2.67 [95% CI: 1.26 to 5.65]) and Stage IV (adjusted sHR = 5.04 [95% CI: 1.93 to 13.16]) and care in a secondary site (adjusted sHR = 2.21 [95% CI: 1.30 to 3.77]).

Conclusions: Mortality was associated with advanced HIV disease and care in secondary facilities. Earlier initiation of therapy and strengthening systems in secondary level facilities may improve retention and ultimately contribute to better clinical outcomes.

Keywords: antiretroviral treatment; mortality; lost to follow-up; Nigeria.

Received 27 September 2011; Revised 25 June 2012; Accepted 20 August 2012; Published 18 September 2012

Copyright: © 2012 Odafe S et al; licensee International AIDS Society. This is an open access article distributed under the terms of the Creative Commons Attribution License (<http://creativecommons.org/licenses/by/3.0/>), which permits unrestricted use, distribution, and reproduction in any medium, provided the original work is properly cited.

Introduction

Antiretroviral therapy (ART) for the treatment of HIV infection has been shown to profoundly alter HIV disease progression, including incidence of opportunistic infections in people living with HIV (PLHIV) [1–3]. Nigeria, Africa's most populous country, accounts for about 10% (3.3 million) of the estimated 33.3 million PLHIV globally [4,5]. The period between 2005 and 2010 coincided with increased availability of antiretroviral drugs and treatment for PLHIV in Nigeria mainly through donor funding [6]. The country rapidly scaled up ART enrolment and has steadily increased the number of PLHIV initiated on ART from 90,008 in 2006 [7] to an estimated 300,000 at the end of 2009 [8].

The measurement of plasma HIV RNA levels is commonly used as an indicator of treatment effectiveness in resource-rich settings [10]. For resource-limited settings, where there is

limited laboratory support, World Health Organization (WHO) in 2006 recommended use of CD4 cell count measurements and clinical outcome measures for monitoring ART in the absence of viral load [11]. Many studies have therefore reported CD4 count increase as a measure of treatment outcome [13–15]. The challenges of delivering ART in low-resource settings have also been documented, most notably: shortages of healthcare staff; inadequate availability of drugs; weak health systems and laboratory capacity; and poor health data management systems [9,16,17]. Although there is evidence that ART reduces mortality and improves immunological, virological and clinical outcomes in HIV patients, most studies have considered patients' characteristics as well as drug regimen [18–25] and attempted to explain the observed variability in treatment outcomes using these characteristics. Few studies have considered differences in the health

delivery system on outcomes especially in resource-limited settings [26].

The levels of care in the public sector in Nigeria include primary centres, typically staffed by nurses, community health officers (CHOs), community health extension workers (CHEWs), junior CHEWs and environmental health officers; secondary hospitals, typically staffed by medical officers, nurses, midwives, laboratory scientists, pharmacists and CHOs; and tertiary centres, typically staffed by medical specialists [27]. Initiation of PLHIV on ART in the country was initially restricted to tertiary centres due to weak health systems in other levels of care. In 2004, following the rapid scale up of ART services and infrastructural upgrade, secondary hospitals began providing ART services.

There are few studies from Nigeria evaluating the various aspects of the country's HIV programme [28]. One study used pharmacy refill records to evaluate risk factors for lost to follow-up (LTFU) and non-adherence to ART [12]. Another reviewed impact of hepatitis B on ART programme [29]. Others reviewed either patient's perception or performance on ART [30–35]. None of the studies reviewed described survival or LTFU on ART in relation to level of care. This study evaluated patients' baseline characteristics as well as level of healthcare associated with clinical outcomes of patients on ART in hospitals supported by the Global HIV/AIDS initiative in Nigeria (GHAIN).

Methods

Study design

This was a retrospective study reviewing routinely collected patient level data between January 2007 and December 2010.

Although data were reviewed retrospectively, the patient-level data were prospectively collected over the study period.

Study context/setting

States in Nigeria are grouped into six geopolitical regions; the northern part of the country has three regions: North West, North East and North Central, while the south is divided into: South West, South-South and South East regions [36]. The GHAIN is a United States Agency for International Development/US President's Emergency Plan for AIDS Relief supported project that was launched in December 2004 [37]. The project assisted several hospitals in Nigeria to provide comprehensive HIV/AIDS care and treatment services in all six geopolitical regions of the country. In 2007, the project piloted the use of Lafiya Management Information System (LAMIS®), an open source electronic medical record (EMR) system, in 10 hospitals and later scaled up LAMIS to a total of 14 hospitals by October 2010 [38]. GHAIN-supported hospitals benefited from infrastructure upgrade and systems strengthening that included support for antiretroviral logistics and supply chain management.

Site selection criteria

The site selection criteria for this study were (1) ART sites using an EMR system; (2) hospitals providing comprehensive ART services to adults; and (3) hospitals starting ART services by January 2007. All 10 hospitals that piloted LAMIS met these criteria and were included in the study. Four of the hospitals were secondary and six were tertiary level facilities. There was at least one hospital from all six regions in the country. Figure 1 shows names of the 10 hospitals included in the study and their locations in the country.



Figure 1. Locations of hospitals included in the study.

Study population

The analysis included male and female patients aged ≥ 16 years initiated on first-line ART in all of the 10 study sites between January and December 2007. Study exclusion criteria included adult patients on second-line ART, patients < 16 years old, HIV-positive patients who were not on ART, pregnant women, and patients initiated on ART outside the defined study period.

Clinical procedure

Patient monitoring and management in selected hospitals were based on Nigerian national ART guidelines, which were derived from the WHO guidelines [39]. The entry point in the HIV/AIDS care and treatment program in all the selected sites is usually from the HIV counselling and testing (HCT) unit of the hospital or through a referral from other hospitals where the patient had received HCT and has been identified as HIV positive and subsequently referred for ART services. At the ART sites, patients undergo clinical evaluation by a clinician followed by baseline laboratory investigations.

HIV-positive patients assessed as being in WHO clinical Stage III or IV, or with a CD4 count < 200 cells/mm³ (irrespective of WHO staging) were considered eligible for ART [39]. The first-line ART regimen included a fixed-dose combination of zidovudine (ZDV), lamivudine (3TC) and nevirapine (NVP). In the case of ZDV- and NVP-related side effects or contraindications, the respective alternatives were stavudine (d4T) or tenofovir (TDF) and efavirenz (EFV) [39].

All out-patients initiated on ART went through at least three sessions of adherence counselling before ART was initiated, and subsequently, they received ongoing adherence counselling at every contact with the facility. Patients requiring admissions or too sick to receive adherence counselling, usually patients with WHO Stage IV disease, received drugs at the specified interval by the nurse in the ward, so that their adherence could be monitored. ART patients who are stable on treatment have their follow-up appointments and investigations except otherwise indicated at six month intervals. Common indications that required an earlier appointment or investigations were unsatisfactory patient adherence level and suspected treatment failure.

Data collection

Clerks at the various points of service captured data for patients newly initiated on ART and on follow-up into the LAMIS. Patients already on ART before introduction of LAMIS had their data entered as backlog. Electronic processes were put in-place to ensure security of data during entry into LAMIS and during transmission and storage.

Definitions

Patients were classified as “defaulters” when they missed any clinical or drug pick-up appointment. Defaulting clients were classified as LTFU if they failed to return to the clinic after 90 days from their expected clinic appointment date and a tracking team had made efforts to contact patients but failed [40]. Patients were considered to have “stopped treatment” when they stopped ART for any reason, including medico-social reasons. Patients referred to as “transfer out” were those who formally requested to transfer care to

another ART site for convenience or due to relocation [40]. Time on ART was calculated in months using the time interval between the date of ART initiation and (1) date of known death, (2) date of leaving the programme due to LTFU, default or stopping of treatment and (3) when 36 months of follow-up had accrued.

Data analysis

Data was exported from LAMIS to Stata version 12.0 (Stata Corporation, College Station, TX, USA) for statistical analysis. The main outcome measures were mortality and LTFU. The predictor variables analyzed were adult patients' characteristics at ART initiation: demographic characteristics (age, sex); CD4 cell count; clinical staging (Stage I to IV); weight (kg); and functional status (working, ambulatory or bedridden). We used competing risk cumulative incidence curve to illustrate time to death and time to LTFU by WHO clinical staging and level of care. Potential predictors associated with time to mortality and time to LTFU were assessed using competing risks regression models described by Fine and Gray [41]. Competing risk for death were LTFU, treatment stop and default. Similarly, competing risk for LTFU were mortality, treatment stop and default. All statistical tests were two-sided at $\alpha = 0.05$. We performed automated and manual consistency checks on the data. In instances where we observed data inconsistencies in the EMR, these were corrected using source documents. Cases that were missing at least one of the variables in the regression model were excluded from the analysis.

Ethical approval

The Nigerian National Health and Research Ethics Committee (NHREC) and FHI360's Protection of Human Subjects Committee (PHSC) approved the study protocol. Both committees determined study as exempt from oversight.

Results

Patients' baseline characteristics

A total of 4785 patients met the study criteria. Of these, 3325 (69.5%) patients were from secondary facilities and 1460 (30.5%) were from tertiary facilities. There were 2840 (59.4%) female patients. The total duration of follow-up was 12,448 person years. The median age and baseline weight at ART initiation were 34 years (interquartile range, IQR: 28 to 41) and 55 kg (IQR: 48 to 62), respectively. Median CD4 count was 152 cells/ μ l (IQR: 75 to 242). A substantial proportion of patients were in WHO Stage III (42.1%) and majority (90.6%) of the patients had a working functional status at baseline. Table 1 summarizes baseline characteristics of the study population.

CD4-cell count changes at follow-up

The CD4 cell count analysis was limited to patients who had been on ART and followed up for at least 24 months. The follow-up median CD4 count for patients on ART for at least 24 months showed a progressive rise. The median CD4 cell count increased by 14.6% from 152 (IQR: 75 to 242) at baseline to 181 (IQR: 95 to 289) at six months; this further increased to 312 (IQR: 194 to 450), 344 (IQR: 227 to 501) and

Table 1. Baseline characteristics of study population (N = 4785)

Characteristic	Secondary (N = 3325)	Tertiary (N = 1460)	Total (N = 4785)
Gender (%)			
Male	1357 (40.81)	588 (40.27)	1945 (40.64)
Female	1968 (59.18)	872 (59.73)	2840 (59.35)
Median age in years (IQR)	34 (28–41)	34 (28–41)	34 (28–41)
Median weight in kg (IQR)	55 (47–62)	56 (49–62)	55 (48–62)
Median CD4 count (cells/μl) (IQR)	152 (75–242)	150 (90–220)	152 (79–234)
WHO clinical stage (%)*			
Stage I	568 (17.21)	231 (15.92)	799 (16.81)
Stage II	854 (25.87)	963 (66.37)	1817 (38.24)
Stage III	1767 (53.53)	232 (15.99)	1999 (42.07)
Stage IV	112 (3.39)	25 (1.72)	137 (2.88)
Functional status (%)*			
Working	3034 (91.91)	1273 (87.73)	4307 (90.64)
Ambulatory	245 (7.42)	152 (10.48)	397 (8.35)
Bedridden	22 (0.67)	26 (1.79)	48 (1.01)
Regimen (%)			
TDF	24 (0.72)	4 (0.27)	28 (0.59)
D4T	1476 (44.39)	784 (53.70)	2260 (47.23)
AZT	1825 (54.89)	672 (46.03)	2497 (52.18)

*Data available for 4752 patients: 3301 secondary and 1451 tertiary.

372 (IQR: 246 to 517) at 12, 18 and 24 months' follow-up investigations, respectively.

Treatment outcome and follow-up

The mean duration of follow-up for the 4840 patients was 28.05 months with 2513 patients alive and on ART at the censoring date of 30 November 2010. During 12,448 person years of follow-up, 362 (7.6%) had stopped treatment and 246 (5.1%) patients were transferred out of the hospitals. LTFU increased with follow-up from 4.3% between 0 and 12 months to 11.3% between 24 and 36 months. Table 2 shows details of treatment outcome by duration on ART.

Mortality on ART

A total of 136 deaths (2.8%) occurred over a 36-month follow-up period giving an overall mortality rate of 11 deaths per 1000 person years. One-third (45/136) of all deaths occurred in the first 3 months, whereas 89 of the deaths (65.4%) occurred in the first 12 months on ART. Majority (72.8%) of

the patients who died over the 36-month follow-up period were in the age group of 25 to 45 years, 53.7% being males. After adjustment using competing risks regression model, patients' baseline characteristics significantly associated with mortality were: low CD4 count and advanced WHO clinical stage. Patients with CD4 cell count below 50 cells/mm³ had more than two-fold higher risk of mortality than those with CD4 count greater than 350 cells/mm³ (adjusted sub-hazard ratio, sHR = 2.84 (95% CI: 1.20 to 6.71)). It was evident that patients in WHO clinical Stage IV had the highest risk of mortality (adjusted sHR = 5.04 (95% CI: 1.93 to 13.16)). Patients in secondary level facility (adjusted sHR = 2.21 (95% CI: 1.30 to 3.77)) were at much higher risk of mortality than those in the tertiary facility. Table 3 provides details of the multivariate competing-risks model of baseline characteristics and level of care associated with deaths. Figure 2a,b show cumulative incidence curve of WHO clinical staging and level of care associated with mortality.

Table 2. Treatment outcome by duration on antiretroviral therapy (N = 4785)

	Duration on antiretroviral therapy (months)			
	0 to 12 (%) N = 4785	12 to 24 (%) N = 4065	24 to 36 (%) N = 3299	0 to 36 (%)
Alive and on ART	4065 (84.95)	3299 (81.16)	2513 (76.17)	2513 (52.52)
Dead	89 (1.86)	33 (0.81)	14 (0.42)	136 (2.84)
LTFU	210 (4.39)	404 (9.94)	371 (11.25)	985 (20.59)
Default	132 (2.76)	110 (2.71)	301 (9.12)	543 (11.35)
Treatment stop	176 (3.68)	157 (3.86)	29 (0.88)	362 (7.57)
Transfer out	113 (2.36)	62 (1.53)	71 (2.15)	246 (5.14)

Table 3. Multivariate competing-risks model of baseline characteristics associated with death (adjusted for type of facility)

	Unadjusted sHR (95% CI)	<i>p</i>	Adjusted sHR (95% CI)	<i>p</i>
Gender				
Female	1.00		1.00	
Male	1.70 (1.22 to 2.39)	0.002	1.29 (0.89 to 1.86)	0.172
Age (years)	1.03 (1.01 to 1.04)	0.002	1.02 (1.00 to 1.04)	0.071
CD4 count (cells/μl)				
> 350	1.00		1.00	
200 to 350	1.80 (0.78 to 4.12)	0.168	1.67 (0.73 to 3.84)	0.227
50 to 199	0.61 (0.23 to 1.60)	0.316	0.61 (0.24 to 1.60)	0.317
<50	3.76 (1.61 to 8.82)	0.002	2.84 (1.20 to 6.71)	0.017
WHO clinical staging				
Stage I	1.00		1.00	
Stage II	1.88 (0.87 to 4.05)	0.109	1.68 (0.74 to 3.77)	0.213
Stage III	4.22 (2.05 to 8.72)	<0.001	2.67 (1.26 to 5.65)	0.010
Stage IV	8.35 (3.36 to 20.77)	<0.001	5.04 (1.93 to 13.16)	0.001
Functional status				
Working	1.00		1.00	
Ambulatory	1.30 (0.74 to 2.27)	0.357	1.11 (0.61 to 2.01)	0.734
Bedridden	3.15 (1.17 to 8.55)	0.025	2.27 (0.82 to 6.31)	0.116
Type of facility				
Tertiary	1.00		1.00	
Secondary	2.30 (1.46 to 3.63)	<0.001	2.21 (1.30 to 3.77)	0.003

Lost to follow-up

The cumulative total number of patients lost to follow-up (LTFU) at 36 months was 985 (20.6%) giving an incidence of 79 per 1000 person years. Of these, 210 (21.3%), 404 (41.0%) and 371 (37.7%) were LTFU at 12, 24 and 36 months on ART, respectively. Review of baseline characteristics of the 985 patients LTFU showed that the majority (72.2%) were in the age group 25 to 45 years and 55.0% were females. Factors associated with LTFU were male gender, being ambulatory, WHO Stage II and level of care. Male patients (adjusted sHR = 1.24 [95% CI: 1.08 to 1.42]) were more likely to be LTFU than females. The hazard of being LTFU decreases with WHO clinical staging (Stage II (adjusted sHR = 1.31 [95% CI: 1.08 to 1.59])). Table 4 provides detail of the multivariate competing-risks model of baseline characteristics and level of care associated with LTFU.

Discussion

This study demonstrated baseline characteristics associated with mortality and LTFU of patients on ART in selected secondary and tertiary hospitals in Nigeria. We found that patients' baseline characteristics associated with mortality on ART include CD4 count (<50 cells/μl), WHO Stage III and IV. Our study also found an association between mortality on ART and level of patient care. We observed that being in care at secondary level hospitals was associated with higher mortality than at tertiary sites. The factors associated with LTFU were male, WHO Stage II and ambulatory status. However, being in care in a secondary site was associated with lower risk of LTFU than at tertiary sites.

Severe immunodeficiency indicated by low CD4 count and advanced WHO clinical staging are well-documented factors associated with mortality of HIV-positive patients [42–46]. In our study population, patients with WHO Stage III disease accounted for 42.1% of patients initiated on ART. This finding was comparable with findings from a study in South Africa that found 46.0% of those initiating ART in Stage III and another from Malawi in which 55.0% were in Stage III [16,47]. The proportion of patients with Stage IV (2.9%) disease in our study was much lower than those reported in both studies [16,47]. Further studies are required to ascertain specific reasons for the low proportion of patients in WHO Stage IV in our study population. Though, a previous study in Nigeria suggested that severely immune-compromised patients may have been too sick to access care [48].

We also found that 33.1% and 65.4% of all deaths in our study population occurred in the first 3 and 12 months, respectively. Other studies from Zambia and Malawi reported mortalities of 71% and 77%, respectively, occurring within the first three months on ART [46,47]. The lower proportion of early deaths observed in our study could be attributed to the relatively low proportion of patients with Stage IV disease and adherence counselling processes in each site. Several studies have reported marked improvement in survival associated with ART in high- and middle-resource countries [3,10,49–54]. There is further evidence from these settings that with sustained high levels of treatment adherence, the risk of morbidity and mortality may diminish to levels observed in the general population [55].

The retention rates in our study of 85.0% at 12 months and 76.2% at 36 months on ART were comparable with findings

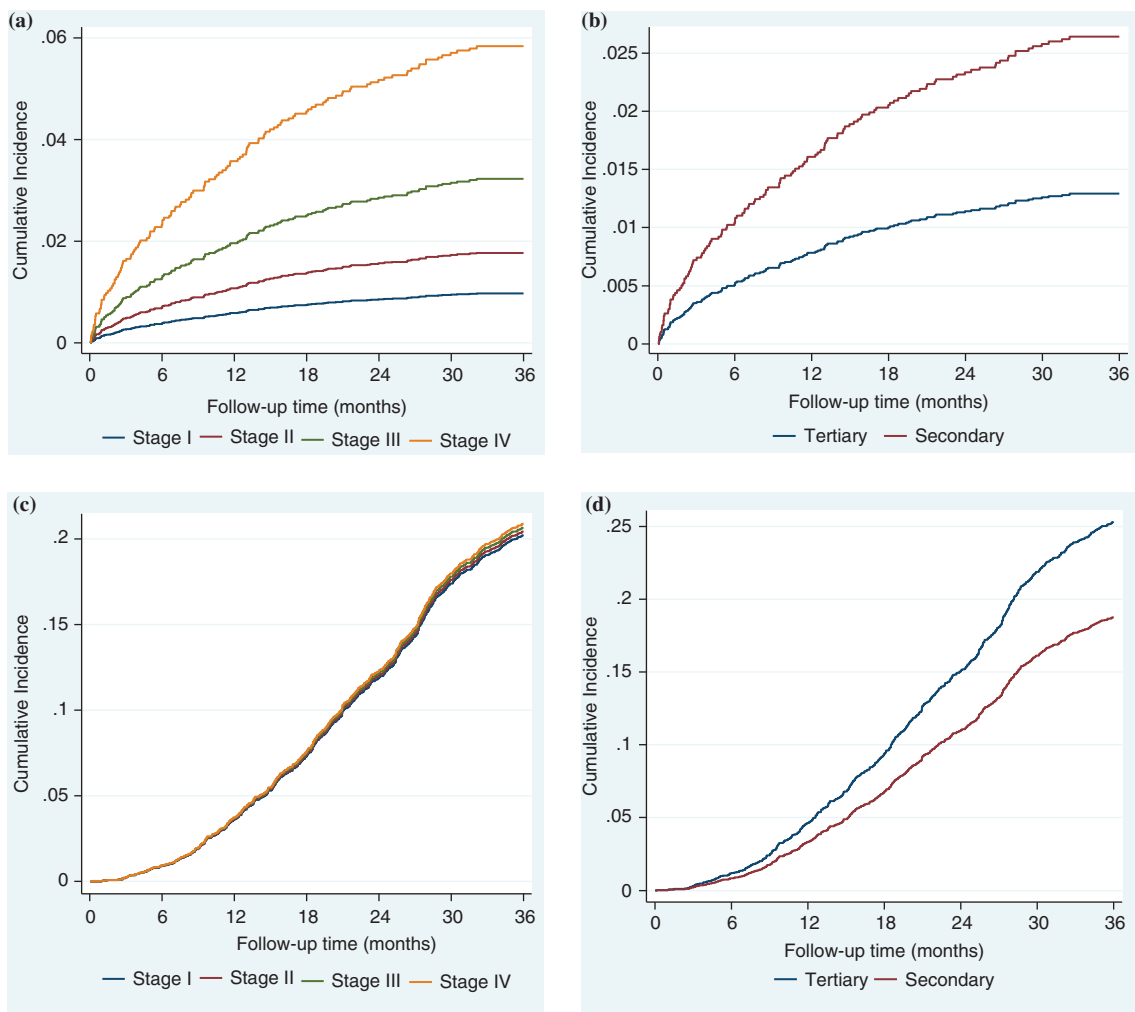


Figure 2. Cumulative incidence curves of mortality (a, b) and LTFU (c, d) by baseline WHO clinical staging and level of care.

from a systematic review of 39 cohorts in sub-Saharan Africa that reported 80.2% and 72.3% retention at 12 and 36 months, respectively [44]. Our retention rates were also comparable to rates reported by the national ART programme in Botswana of 82.7% and 79.3% at 12 and 36 months, respectively [42]. Patients LTFU accounted for the majority of attritions from care throughout the follow-up period. These findings were consistent with reports from other studies from several countries in sub-Saharan Africa [44,56–58]. Although we did not investigate reasons for LTFU in our study population, one study suggested that patients LTFU may in fact have informally transferred to other sites [44], while some others reported that the majority of patients that were LTFU may have actually died [59–61].

We observed that being male was a risk factor for LTFU. This finding was consistent with those reported by a previous study in Nigeria and a study that reviewed 29 ART programs in 13 low-income countries [48,62]. This supports the proposition of gender differences in health-seeking behaviour [48,62,63]. We did not investigate the reasons for the gender differences with LTFU; however, a previous study suggested that women are more likely than men to attend health

services because of dedicated provisions of reproductive and child health services, whereas services addressing men's health needs are largely under-developed [62]. We also observed that patients in WHO Stage II had a higher risk of LTFU compared to other stages. This finding may be due to patients who may have considered themselves well and need not return to continue ART.

Our findings also highlight the need to consider level of care and patients' clinical outcomes. We found that care in a secondary facility was associated with a higher risk of mortality but lower risk of LTFU compared to tertiary sites. This finding corroborates results from a study in Malawi that observed better retention but higher mortality among patients on ART in rural health centres compared to hospitals [64]. However, one study in South Africa comparing nurse-monitored versus doctor-monitored ART care at primary healthcare centres found no difference in retention rates between nurse-monitored ART and doctor-monitored ART patients [65].

A study in Malawi suggested that better geographical access provided by lower level facilities and better personal knowledge of the patient by the providers at that level may

Table 4. Multivariable competing-risks model of baseline characteristics associated with LTFU (adjusted for type of facility)

	Unadjusted sHR (95% CI)	<i>p</i>	Adjusted sHR (95% CI)	<i>p</i>
Gender				
Female	1.00		1.00	
Male	1.22 (1.07 to 1.38)	0.002	1.24 (1.08 to 1.42)	0.002
Age (years)	1.00 (0.99 to 1.01)	0.735	1.00 (0.99 to 1.00)	0.347
CD4 count (cells/μl)				
> 350	1.00		1.00	
200 to 350	0.98 (0.77 to 1.26)	0.889	0.90 (0.70 to 1.17)	0.438
50 to 199	0.89 (0.68 to 1.15)	0.366	0.84 (0.65 to 1.10)	0.211
<50	1.24 (0.94 to 1.63)	0.122	1.16 (0.88 to 1.53)	0.302
WHO clinical staging				
Stage I	1.00		1.00	
Stage II	1.43 (1.18 to 1.73)	<0.001	1.31 (1.08 to 1.59)	0.005
Stage III	1.17 (0.97 to 1.42)	0.099	1.12 (0.92 to 1.37)	0.270
Stage IV	0.98 (0.63 to 1.51)	0.912	0.84 (0.53 to 1.32)	0.452
Functional status				
Working	1.00		1.00	
Ambulatory	1.33 (1.08 to 1.63)	0.006	1.25 (1.01 to 1.54)	0.038
Bedridden	1.41 (0.82 to 2.45)	0.218	1.37 (0.78 to 2.41)	0.274
Type of facility				
Tertiary	1.00		1.00	
Secondary	0.74 (0.65 to 0.84)	<0.001	0.76 (0.66 to 0.87)	<0.001

be reasons for lower LTFU in lower level facilities [64]. Another study in Nigeria, however, reported that patients may not necessarily utilize services at facilities close to their communities due to stigma [48]. These findings have implications for the current drive to decentralize ART services to primary health centres and suggest that lower level care requires systematic strengthening of their health system to ensure that the standards of patient care is comparable to what are available in tertiary facilities.

The strength of our study was the large enough sample available for the analysis and the use of EMRs at the study sites. However, limitations include a limited number of observed variables that went into data analysis because data was collected using national data collection tools not primarily designed for research purposes. In addition, because we could not ascertain outcomes of patients LTFU, our mortality results might be an underestimation. Furthermore, findings from our study were drawn from 10 (purposively) selected sites; limiting the generalizability of our findings.

Conclusions

This study demonstrated that mortality and LTFU amongst first-line ART patients in selected Nigerian hospitals were comparable with those reported in other settings in sub-Saharan Africa. Mortality was associated with advanced HIV disease at baseline and being in care at secondary level facilities. LTFU was associated with male gender, ambulatory functional status and WHO Stage II. Study findings suggest that further evaluation of systems at secondary and tertiary levels will be needed to establish specific reasons for

differences in risk for mortality and LTFU. Earlier initiation of ART with improved adherence counselling especially amongst males and interventions to strengthen systems at secondary level facilities may improve retention and ultimately contribute to better clinical outcomes.

Authors' affiliations

¹FHI360 Nigeria, Global HIV/AIDS Initiative Nigeria, Abuja, Nigeria; ²Statistics and Monitoring Section, Division of Policy and Strategy, UNICEF, New York, NY, USA; ³Office of the Inspector General, Global Fund to fight AIDS, Tuberculosis and Malaria, Geneva, Switzerland; ⁴HIV/AIDS/TB Unit, USAID Nigeria, Abuja, Nigeria; ⁵Department of Family Medicine, Medical University of Southern Africa, Pretoria, South Africa

Competing interests

All authors declare that they have no financial or non-financial commercial interests that may be pertinent to the submitted work.

Authors' contributions

SO, OI, TB, OO, BA, CS, KT, EO and ONC were involved with the conception and design of the study. SO, CS, ONC, HK and KT were involved in coordination, interpretation of the data, drafting of the manuscript and review of manuscript for intellectual content. CS and BA were involved in data analysis. EO and OO reviewed manuscripts and contributed significantly to improving the intellectual content and text of manuscript. All authors have read and approved the final version of the manuscript.

Abbreviations

ART, antiretroviral treatment; CHEWs, community health extension workers; CHOs, community health officers; d4T, stavudine; EFV, efavirenz; EMR, electronic medical record; GHAIN, Global HIV/AIDS initiative in Nigeria; HCT, HIV counselling and testing; IQR, interquartile range; LAMIS, Lafiya Management Information System; LTFU, lost to follow-up; NHREC, Nigerian National Health and Research Ethics Committee; NVP, nevirapine; PHSC, Protection of Human Subjects Committee; sHR, sub-hazard ratio; TDF, tenofovir; WHO, World Health Organization; ZDV, zidovudine; 3TC, lamivudine.

Acknowledgements

The technical support of both the HIV and AIDS Division of the Federal Ministry of Health and the National AIDS Control Agency in Nigeria were vital in the successful implementation of ART services in all sites involved in this project. We also acknowledge Dr. Carol D. Hamilton of FHI360 North Carolina for her insightful comments and contributions to this paper. Support for this paper was provided by FHI360's Global HIV/AIDS Initiative in Nigeria with funds from the US President's Emergency Plan for AIDS Relief (PEPFAR) through US Agency for International Development (USAID) Cooperative Agreement No. 620-A-00-04-00122-00. The views expressed in this publication do not necessarily reflect those of FHI360.

References

- Mellors JW, Munoz A, Giorgi JV, Margolick JB, Tassoni CJ, Gupta P, et al. Plasma viral load and CD4+ lymphocytes as prognostic markers of HIV-1 infection. *Ann Intern Med.* 1997;126:946–54.
- O'Brien WA, Hartigan PM, Martin D, Esinhart J, Hill A, Benoit S, et al. Changes in plasma HIV-1 RNA and CD4+ lymphocyte counts and the risk of progression to AIDS. *N Engl J Med.* 1996;334:426–31.
- Palella F, Delaney K, Moorman A, Loveless M, Fuhrer J, Satten G, et al. Declining morbidity and mortality among patients with advanced human immunodeficiency virus infection. *N Engl J Med.* 1998;338:853–60.
- UNAIDS. Global report. Geneva: WHO; 2010.
- UNAIDS country HIV and AIDS estimates. [cited 2011 September 15]. Available from: <http://www.unaids.org/en/regionscountries/countries/nigeria/>
- National Agency for the control of AIDS (NACA). National HIV/AIDS strategic plan 2010–2015. In: Policy and strategy. Abuja: NACA; 2010. p. 17.
- National Agency for the Control of AIDS (NACA). Nigeria UNGASS Report. In: Strategic planning and research. Abuja: NACA; 2007. p. 20.
- UNAIDS country factsheet: Nigeria. [cited 2011 September 25]. Available from: <http://www.unaids.org/en/Regionscountries/Countries/Nigeria/>
- Lawn SD, Myer L, Orrell C, Bekker LG, Wood R. Early mortality among adults accessing a community-based antiretroviral service in South Africa: implications for programme design. *AIDS.* 2005;19:2141–8.
- Bartlett JA, DeMasi R, Quinn J, Moxham C, Rousseau F. Overview of the effectiveness of triple combination therapy in antiretroviral-naïve HIV-1 infected adults. *AIDS.* 2001;15:1369–77.
- WHO. Antiretroviral therapy for HIV infection in adults and adolescents: recommendations for public health approach. In: 2006 revision. Geneva: HIV/AIDS Programme, World Health Organization; 2006.
- World Health Organization. Antiretroviral therapy for HIV infection in adults and adolescents. Recommendations for a public health approach (2010 Revisions). In: Summary of changes. Austria: World Health Organization; 2010. p. 19.
- Chi BH, Cantrell RA, Zulu I, Mulenga LB, Levy JW, Tambatamba BC, et al. Adherence to first-line antiretroviral therapy affects non-virologic outcomes among patients on treatment for more than 12 months in Lusaka, Zambia. *Int J Epidemiol.* 2009;38:746–56.
- Melekhin VV, Shepherd BE, Stinnette SE, Rebeiro PF, Barkanic G, Raffanti SP, et al. Antiretroviral therapy initiation before, during, or after pregnancy in HIV-1-infected women: maternal virologic, immunologic, and clinical response. *PLoS One.* 2009;4:e6961.
- Patel K, Hernan MA, Williams PL, Seeger JD, McIntosh K, Dyke RB, et al. Long-term effects of highly active antiretroviral therapy on CD4+ cell evolution among children and adolescents infected with HIV: 5 years and counting. *Clin Infect Dis.* 2008;46:1751–60.
- Coetzee D, Hildebrand K, Boule A, Maartens G, Louis F, Labatula V, et al. Outcomes after two years of providing antiretroviral treatment in Khayelitsha, South Africa. *AIDS.* 2004;18:887–95.
- Van Damme W, Kober K, Laga M. The real challenges for scaling up ART in sub-Saharan Africa. *AIDS.* 2006;20:653–6.
- Fournier S, Chaffaut C, Maillard A, Loze B, Lascoux C, Gerard L, et al. Factors associated with virological response in HIV-infected patients failing antiretroviral therapy: a prospective cohort study. *HIV Med.* 2005;6:129–34.
- Grabar S, Pradier C, Le Corfec E, Lancar R, Allavena C, Bentata M, et al. Factors associated with clinical and virological failure in patients receiving a triple therapy including a protease inhibitor. *AIDS.* 2000;14:141–9.
- Le Moing V, Chene G, Carrieri MP, Alioum A, Brun-Vezinet F, Piroth L, et al. Predictors of virological rebound in HIV-1 infected patients initiating a protease-containing regimen. *AIDS.* 2002;16:21–9.
- Mocroft A, Ruiz L, Reiss P, Ledergerber B, Katlama C, Lazzarin A, et al. Virological rebound after suppression on highly active antiretroviral therapy. *AIDS.* 2003;17:1741–51.
- Paredes R, Mocroft A, Kirk O, Lazzarin A, Barton SE, van Lunzen J, et al. Predictors of virological success and ensuing failure in HIV-positive patients starting highly active antiretroviral therapy in Europe: results from the EuroSIDA study. *Arch Intern Med.* 2000;160:1123–32.
- Parienti JJ, Massari V, Descamps D, Vabret A, Bouvet E, Larouze B, et al. Predictors of virologic failure and resistance in HIV-infected patients treated with nevirapine- or efavirenz-based antiretroviral therapy. *Clin Infect Dis.* 2004;38:1311–6.
- Paris D, Ledergerber B, Weber R, Jost J, Flepp M, Opravil M, et al. Incidence and predictors of virologic failure of antiretroviral triple-drug therapy in a community-based cohort. *AIDS Res Hum Retroviruses.* 1999;15:1631–8.
- Tuboi SH, Harrison LH, Sprinz E, Albernaz RK, Schechter M. Predictors of virologic failure in HIV-1-infected patients starting highly active antiretroviral therapy in Porto Alegre, Brazil. *J Acquir Immune Defic Syndr.* 2005;40:324–8.
- Fielding K, Charalambous S, Stenson A, Pemba L, Martin D, Wood R, et al. Risk factors for poor virological outcome at 12 months in a workplace-based antiretroviral therapy programme in South Africa: a cohort study. *BMC Infect Dis.* 2008;8:93.
- Federal Ministry of Health (FMOH). Revised National Health Policy. In: Health planning research and statistics. Abuja: FMOH; 2004.
- National Agency for the Control of AIDS (NACA). National HIV/AIDS policy review report. In: Research and new technologies. Abuja: NACA; 2009. p. 54.
- Idoko J, Meloni S, Muazu M, Nimzing L, Badung B, Hawkins C, et al. Impact of hepatitis B virus infection on human immunodeficiency virus response to antiretroviral therapy in Nigeria. *Clin Infect Dis.* 2009;49:1268–73.
- Awodele O, Agbaje EO, Adesina EA, Akintonwa A. Hepatoprotective role of neutrosecR on hepatic damage induced by combination of zidovudine and combined anti-tuberculous agents in rats. *Tokai J Exp Clin Med.* 2011;36:31–6.
- Ntekim AI, Folasire AM. CD4 count and anti retroviral therapy for HIV positive patients with cancer in Nigeria – a pilot study. *Clin Med Insights Oncol.* 2010;4:61–6.
- Nwabueze SA, Adogu PO, Ilika AL, Asuzu MC, Adinma ED. Perception of quality of care in HIV/AIDS programmes among patients in a tertiary health care facility in Anambra State. *Niger J Med.* 2011;20:144–50.
- Olowookere SA, Fatiregun AA. Human immunodeficiency virus postexposure prophylaxis at Ibadan, Nigeria. *J Int Assoc Physicians AIDS Care (Chic).* 2010;9:187–90.
- Rawizza HE, Chaplin B, Meloni ST, Eisen G, Rao T, Sankale JL, et al. Immunologic criteria are poor predictors of virologic outcome: implications for HIV treatment monitoring in resource-limited settings. *Clin Infect Dis.* 2011;53:1283–90.
- Yakasai AM, Muhammad H, Babashani M, Jumare J, Abdulmumini M, Habib AG. Once-daily antiretroviral therapy among treatment-experienced Muslim patients fasting for the month of Ramadan. *Trop Doct.* 2011;41:233–5.
- Federal Ministry of women affairs. Nigeria's report on the implementation of the Beijing platform for action and common wealth plan of action. In: Preamble. Abuja: Federal Ministry of Women Affairs; 2004. p. 2.
- The Global HIV/AIDS Initiative Nigeria (GHAIN) Project. accessed 2011 August 29. Available from: <http://www.fhi360.org/NR/rdonlyres/ek2sg7ggngqfivfajis6by747jvi2obc27at5mjng4xwkgafjrg3dizvklcjocbels3os24rp4pi/GHAINProjectProfile1enhv.pdf>
- Lafiya Management Information System (LAMIS). [cited 2011 August 29]. Available from: <http://www.lamisworld.org/aboutlamis.html>
- Federal Ministry of Health (FMOH). National guidelines for HIV and AIDS treatment and care in adolescence and adults. Abuja: FMOH; 2007. p. 12.
- World Health Organization (WHO). Patient monitoring guidelines for HIV care and antiretroviral therapy (ART). In: HIV/AIDS. Geneva: WHO Press; 2006. p. 30–31.
- Fine J, Gray RJ. A proportional hazards model for the subdistribution of competing risk. *J Am Stat Assoc.* 1991;94:496–509.
- Bussmann H, Wester CW, Ndwapi N, Grundmann N, Gaolathe T, Puvimanasinghe J, et al. Five-year outcomes of initial patients treated in Botswana's National Antiretroviral Treatment Program. *AIDS.* 2008;22:2303–11.
- Calmy A, Pinoges L, Szumilin E, Zachariah R, Ford N, Ferradini L, et al. Generic fixed-doses combination antiretroviral treatment in resource-poor settings: multicentre observation cohort. *AIDS.* 2006;20:1163–9.

44. Fox MP, Rosen S. Patient retention in antiretroviral therapy programs up to three years on treatment in sub-Saharan Africa, 2007–2009: a systematic review. *Trop Med Int Health*. 2010;15:1–15.
45. Marazzi M, Liotta G, Germano P, Guidotti G, Altan AD, Cefta S, et al. Excessive early mortality in the first year of treatment in HIV type 1-infected patients initiating antiretroviral therapy in resource-limited settings. *AIDS Res Hum Retroviruses*. 2008;24:555–60.
46. Stringer JS, Zulu I, Levy J, Stringer EM, Mwangi A, Chi BH, et al. Rapid scale-up of antiretroviral therapy at primary care sites in Zambia: feasibility and early outcomes. *JAMA*. 2006;296:782–93.
47. Ferradini L, Jeannin A, Pinoges L, Izopet J, Odhiambo D, Mankhambo L, et al. Scaling up of highly active antiretroviral therapy in a rural district of Malawi: an effectiveness assessment. *Lancet*. 2006;367:1335–42.
48. Charurat M, Oyegunle M, Benjamin R, Habib A, Eze E, Ele P, et al. Patient retention and adherence to antiretrovirals in a large antiretroviral therapy program in Nigeria: a longitudinal analysis for risk factors. *PLoS One*. 2010;5:e10584.
49. Antiretroviral Therapy Cohort C. Mortality of HIV-infected patients starting potent antiretroviral therapy: comparison with the general population in nine industrialized countries. *Int J Epidemiol*. 2009;38:1624–33.
50. Egger M, May M, Chene G, Phillips AN, Ledergerber B, Dabis F, et al. Prognosis of HIV-1-infected patients starting highly active antiretroviral therapy: a collaborative analysis of prospective studies. *Lancet*. 2002;360:119–2.
51. Malta M, Bastos FI, Da Silva CM, Pereira GFM, Lucena FF, Fonseca MG, et al. Differential survival benefit of universal HAART access in Brazil: a nationwide comparison of injecting drug users versus men who have sex with men. *J Acquir Immune Defic Syndr*. 2009;52:629–35.
52. Melo LS, Lacerda HR, Campelo E, Moraes E, Ximenes RA. Survival of AIDS patients and characteristics of those who died over eight years of highly active antiretroviral therapy, at a referral center in northeast Brazil. *Braz J Infect Dis*. 2008;12:269–77.
53. Mocroft A, Ledergerber B, Katlama C, Kirk O, Reiss P, d'Arminio MA, et al. Decline in the AIDS and death rates in the EuroSIDA study: an observational study. *Lancet*. 2003;362:22–9.
54. Sterne JA, Hernan MA, Lederberger B, Tilling K, Weber R, Sendi P, et al. Long-term effectiveness of potent antiretroviral therapy in preventing AIDS and death: a prospective cohort study. *Lancet*. 2005;366:378–84.
55. Lewden C, Chêne G, Morlat P, Raffi F, Dupon M, Dellamonica P, et al. HIV-infected adults with a CD4 cell count greater than 500 cells/mm³ on long-term combination antiretroviral therapy reach same mortality rates as the general population. *JAIDS*. 2007;46:72–7.
56. Chabikuli O, Datonye D, Nachenga J, Ansong D. Adherence to antiretroviral therapy, virologic failure and workload at the Rustenburg Provincial Hospital. *SA Fam Pract*. 2010;52:350–5.
57. Bisson GP, Stringer JS. Lost but not forgotten—the economics of improving patient retention in AIDS treatment programs. *PLoS Med*. 2009;6:e1000174.
58. Sydney R, Fox MP, Gill CJ. Patient retention in antiretroviral therapy programs in sub-Saharan Africa: a systematic review. *PLOS Med*. 2007;4:298.
59. Brinkhof MW, Dabis F, Myer L, Bangsberg DR, Boule A, Nash D, et al. Early loss of HIV-1-infected patients on potent antiretroviral therapy programmes in lower-income countries. *Bull WHO*. 2008;86:559–67.
60. Brinkhof MW, Pujades-Rodriguez M, Egger M. Mortality of patients lost to follow-up in antiretroviral treatment programmes in resource-limited settings: systematic review and meta-analysis. *PLoS One*. 2009;4:e5790.
61. Yu JK, Chen SC, Wang KY, Chang CS, Makombe SD, Schouten EJ, et al. True outcomes for patients on antiretroviral therapy who are “lost to follow-up” in Malawi. *Bull WHO*. 2007;85:550–4.
62. Braitstein P, Boule A, Nash D, Brinkhof M, Laurent C, Schechter M, et al. Gender and the use of antiretroviral treatment in resource-constrained settings: findings from a multicenter collaboration. *J Womens Health (Larchmt)*. 2008;17:47–55.
63. Torpey K, Lartey M, Amenyah R, Addo N, Obeng-Baah J, Rahman Y, et al. Initiating antiretroviral treatment in a resource-constrained setting: does clinical staging effectively identify patients in need? *Int J STD AIDS*. 2009;20:395–8.
64. Massaquoi M, Zacharia R, Manzi M, Pasulani O, Misindi D, Mwangomba B, et al. Patient retention and attrition on antiretroviral treatment at district level in rural Malawi. *R Soc Trop Med Hyg*. 2009;103:594–600.
65. Sanne I, Orrell C, Fox MP, Conradie F, Ive P, Zeinecker J, et al. Nurse versus doctor management of HIV-infected patients receiving antiretroviral therapy (CIPRA-SA): a randomised non-inferiority trial. *Lancet*. 2010;376:33–40.