

# Apolipoprotein L1 risk genotypes in Ghanaian patients with systemic lupus erythematosus: a prospective cohort study

Ashira Blazer <sup>1</sup>, Ida Dzifa Dey,<sup>2</sup> Janet Nwaukoni,<sup>3</sup> Margaret Reynolds,<sup>4</sup> Festus Ankrah,<sup>4</sup> Huda Algasas,<sup>5</sup> Tasneem Ahmed,<sup>6</sup> Jasmin Divers<sup>7</sup>

**To cite:** Blazer A, Dey ID, Nwaukoni J, *et al.* Apolipoprotein L1 risk genotypes in Ghanaian patients with systemic lupus erythematosus: a prospective cohort study. *Lupus Science & Medicine* 2021;**8**:e000460. doi:10.1136/lupus-2020-000460

Received 10 November 2020  
Revised 13 December 2020  
Accepted 23 December 2020

## ABSTRACT

**Objective** Two apolipoprotein L1 (*APOL1*) risk variants (RV) are enriched in sub-Saharan African populations due to conferred resistance to *Trypanosoma brucei*. These variants associate with adverse renal outcomes by multiple causes including SLE. Despite emerging reports that SLE is common in Ghana, where *APOL1* variant allelic frequencies are high, the regional contribution to SLE outcomes has not been described. Accordingly, this prospective longitudinal cohort study tested the associations between *APOL1* high-risk genotypes and kidney outcomes, organ damage accrual and death in 100 Ghanaian patients with SLE.

**Methods** This was a prospective cohort study of 100 SLE outpatients who sought care at Korle bu Teaching Hospital in Accra, Ghana. Adult patients who met 4 American College of Rheumatology criteria for SLE were genotyped for *APOL1* and followed longitudinally for SLE activity as measured by the Safety of Estrogens in Lupus National Assessment-Systemic Lupus Erythematosus Disease Activity Index (SELENA-SLEDAI) hybrid and organ injury as measured by the Systemic Lupus International Collaborating Clinics Damage Index (SDI) at baseline and every 6 months for 1 year. Outcomes of interest were kidney function, SDI and case fatality.

**Results** Assuming a recessive inheritance, the *APOL1* high-risk genotype (2RV) associated with end-stage renal disease (ESRD) at an OR of 14 ( $p=0.008$ ). These patients accrued more SDI points particularly in renal and neurological domains. The SDI was 81.3% higher in 2RV patients compared with 0RV or 1RV patients despite no difference in SLE activity ( $p=0.01$ ). After a 12-month period of observation, 3/12 (25%) of the 2RV patients died compared with 2/88 (2.3%) of the 0RV or 1RV carriers (OR=13.6,  $p=0.01$ ). Deaths were due to end-stage kidney disease and heart failure.

**Conclusion** *APOL1* RVs were heritable risk factors for morbidity and mortality in this Ghanaian SLE cohort. Despite no appreciable differences in SLE activity, *APOL1* high-risk patients exhibited progressive renal disease, organ damage accrual and a 13-fold higher case fatality.

## INTRODUCTION

Two coding change variants in the apolipoprotein L1 (*APOL1*) gene, G1 (S342G and I384M) and G2 (N388del;Y389del), have recently been identified in sub-Saharan

## Key messages

- ▶ *APOL1* high-risk genotype is known to associate with SLE nephritis progression.
- ▶ In this cohort, *APOL1* high-risk genotype contributed to SLE damage accrual.
- ▶ *APOL1* high-risk genotype carriers exhibited excess damage despite no differences in SLE disease activity.
- ▶ Case fatality rate was 14 fold higher in *APOL1* high-risk genotype SLE patients.
- ▶ *APOL1* genotype may be an important genetic contributor to SLE morbidity and mortality.

African genomes. Some of the highest reported *APOL1* variant allele frequencies can be found in Ghana, where up to 41% and 13% of alleles carry the G1 and G2 variants, respectively.<sup>1</sup> The variants are thought to have been evolutionarily conserved due to a protection against *Trypanosoma brucei*, the parasite cause of African trypanosomiasis.<sup>1</sup> This infectious protection comes with a higher risk of several adverse phenotypes, including end-stage renal disease (ESRD) by multiple causes and SLE nephritis.<sup>2–4</sup> Several epidemiological studies on the African continent have linked *APOL1* to progressive renal disease, hypertension and stroke; however, no study has been performed in SLE.<sup>5–9</sup>

SLE may represent an important context under which *APOL1* variants confer heightened risk. Associations between adverse phenotypes and *APOL1* high-risk genotypes, defined as two variants in any combination (G1/G1, G1/G2, or G2/G2), are highly heterogeneous. For example, the odds of developing chronic kidney disease range from 1.5 to 2.0 in otherwise healthy individuals, to 2.5–7.3 in SLE nephritis, to 29–80 in HIV-associated nephropathy.<sup>10–12</sup> In SLE, the *APOL1* high-risk genotype has been shown to



© Author(s) (or their employer(s)) 2021. Re-use permitted under CC BY-NC. No commercial re-use. See rights and permissions. Published by BMJ.

For numbered affiliations see end of article.

### Correspondence to

Dr Ashira Blazer; Ashira.Blazer@nyulangone.org

associate with collapsing glomerulopathy and progression to ESRD.<sup>2,12</sup> Even carrying a single variant copy has been associated with hypertension, prevalent cardiovascular disease and kidney injury in SLE.<sup>13,14</sup> One hypothesis for this is that gene penetrance is contingent on environmental ‘second hits’.<sup>15</sup>

Consistent with its immune function, *APOLI* expression is highly responsive to inflammatory signals.<sup>16</sup> We and others have shown that a wide range of stimuli, including endogenous and exogenous interferons, auto-antigens and SLE serum, increase *APOLI* expression and therefore intracellular accumulation.<sup>16,17</sup> *APOLI* contains both a BH3 domain that participates in the cellular stress response through autophagy, and a pore-forming domain that can traverse phospholipid bilayers in a pH-dependent fashion.<sup>18,19</sup> At high expression levels, intracellularly accumulated *APOLI* shifts from a pro-autophagic function towards a cytotoxic pore-forming function.<sup>18,20</sup> Pore formation has been shown to cause injury in kidney and vascular-related cells including podocytes and endothelial cells.<sup>21</sup>

Recent literature reports that severe SLE is more common in Ghana than previously appreciated. For example, a retrospective review showed that SLE represented 5.28/1000 inpatient admissions at Korle bu Teaching Hospital in Accra, Ghana.<sup>22</sup> These patients experienced high mortality as 43% died, most commonly of kidney disease, over a 2-year period.<sup>23</sup> It is unclear how *APOLI* high-risk genotype contributes to this trend. We therefore conducted a prospective cohort study comparing outcomes across *APOLI* genotype groups in patients with SLE seeking care at Korle bu Teaching Hospital in Accra, Ghana.

## METHODS

### Study population

Enrolment was initiated at Korle bu Teaching Hospital outpatient rheumatology clinics between 2015 and 2017. A consecutive sample of 100 individuals seeking clinical rheumatology care was invited to participate. Inclusion criteria were as follows: (1)  $\geq 18$  years of age, (2) self-reported Ghanaian ancestry and (3) fulfilling at least four 1982 American College of Rheumatology (ACR) criteria for SLE.<sup>24</sup> Patients who were unwilling or unable to sign consent were excluded.

### Patient involvement

Patients were involved in the conduct of this research study. The study coordinator team in Accra, Ghana included patient advocates trained to engage and inform other patients participating in The Rheumatology Initiative support group, founded by author, DD. During the study, interactions between the study team and patients were facilitated through monthly educational sessions. Once the study is published, patients and participants will be informed of the results through these support group sessions.

## Data collection

**Initial enrolment:** each study participant completed a survey to assess demographics, medication lists and ACR SLE criteria. Both the Systemic Lupus International Collaborating Clinics (SLICC) Damage Index (SDI)<sup>25</sup> and SELENA-Systemic Lupus Erythematosus Disease Activity Index (SELENA-SLEDAI) hybrid<sup>26,27</sup> were recorded during routine clinical visits. The SELENA-SLEDAI hybrid<sup>28</sup> comprises the same definitions as the original SELENA-SLENA-SLEDAI,<sup>29</sup> but uses the definition of the SLEDAI and SLEDAI-2K<sup>27</sup> to score the domain of proteinuria. We chose the hybrid because the SELENA-SLEDAI only scores 4 points for proteinuria when there is an increase of 500 mg/24 hours over the previous visit. For studying this cohort, we favoured capturing ongoing proteinuria as defined by the SLEDAI and SLEDAI-2K, both of which score proteinuria of  $>500$  mg/24 hours regardless of the previous visit. Complete physical examination, vital signs and anthropometric measurements were recorded. SLE serological results including anti-ANA, antidouble-stranded DNA antibodies (dsDNA), anti-SSA/Ro antibodies (Ro), anti-SSB/La antibodies (La), anti-Smith antibodies (Smith), anti-U1/RNP antibodies (RNP) and antiphospholipid antibodies were recorded. Baseline urine samples were evaluated by dipstick and urinalysis where available (Acon Laboratories, San Diego, California, USA), and saliva and whole blood were collected for DNA extraction (Oragene saliva collection kits DNA Genotek, Ottawa, Ontario, Canada) and serum and plasma (Becton, Dickinson and Company, Franklin Lakes, New Jersey, USA), respectively. Serum, plasma and saliva samples were dated, batched and shipped to the New York University (NYU) laboratory for processing.

**Follow-up:** each patient was followed longitudinally at 6-month intervals for 1 year. During follow-up visits, physical exams, SELENA-SLEDAI, laboratory review and medication lists were recorded. Serum, plasma and urine dipstick were again taken or recorded.

### Sample assessment

**Apolipoprotein L1 genotyping:** study patients’ genomic DNA was isolated from saliva using Oragene reagents according to the manufacturer’s instructions (DNA Genotek). As described previously, DNA isolates were stored at  $-80^{\circ}\text{C}$ , and quantitated using a Nanodrop-1000 spectrophotometer (Nanodrop Products, Wilmington, Delaware, USA). DNA templates (100 ng) were used for conventional PCR as previously described.<sup>14</sup> A single 300-base pair DNA segment containing the *APOLI* gene, including reference G0 allele and polymorphisms G1 (rs73885319 and rs60910145) and G2 (rs71785313), was amplified using ApliTaq Gold 360 DNA Polymerase (Applied Biosystems, Foster City, California, USA). For quality control, DNA was elongated in both forward and reverse directions. Genotypes were analysed using the Genewiz online platform as previously described.<sup>14</sup>

*Autoantibody serological screening:* batched and shipped serum samples were screened for ANAs using the BioPlex 220 ANA Screen in the NYU Langone Hospitals clinical lab. This automated system uses multiplex technology to measure 13 antibodies including SLE-relevant antigens dsDNA, chromatin, RNP-68 kDa, SSA-52 kDa, SSA-60 kDa and Sm/RNP as described.<sup>30</sup> A mixture of antigen-coated

beads was combined with patient sample and diluent for an incubation period of 20 min at 37°C. Beads were washed and treated with antihuman IgG antibody conjugated to phycoerythrin dye for a 10 min incubation. Excess conjugate was removed, and the mixture was passed through a detector. The bead type and amount detected were read and reported.

**Table 1** Characteristics of the study population

	Genotype			P value	Total (n=100)
	ORV (n=38)	1RV (n=50)	2RV (n=12)		
<b>Demographics</b>					
Age (years)	32.3±10.5	32.5±8.8	31.9±8.7	0.2	32.4±9.4
Gender (% female)	100	98	100	0.4	99
Disease duration (years)	1.9±1.4	2.5±2.9	2.7±1.7	0.3	2.3±2.3
Symptom onset to diagnosis (months)	6.1±13.6	11.5±18.4	2.7±5.3	0.1	8.5±15.8
<b>SLE clinical criteria (% positive)</b>					
Malar rash	45	52	33	0.5	49
Discoid rash	45	36	33	0.7	41
Photosensitivity	39	36	67	0.2	39
Mucosal ulcers	47	48	50	0.9	48
Arthritis	82	68	100	<b>0.04</b>	77
Serositis	55	52	41	0.7	50
Renal	61	49	45	0.5	53
Neurological	18	12	0	0.2	13
Haematological	50	45	45	0.8	50
Immunological	85	71	63	0.2	76
ANA	97	88	100	0.2	93
<b>Serological markers (%)</b>					
dsDNA	73	65	<b>27</b>	<b>0.02</b>	63
Smith	64	49	45	0.4	54
Ro	48	62	36	0.2	53
La	13	20	17	0.7	15
RNP	71	56	82	0.2	65
<b>Ancillary medications (% taking)</b>					
Statin	11	0	9	0.1	5
ASA	0	2.1	0	0.8	1
ACE or ARB	22.2	18.8	9.0	0.1	18.9
<b>SLE medications</b>					
Average prednisolone dose (mg)	11.5±8.1	14.4±11.4	10.7±4.5	0.3	12.8±9.6
Average HCQ dose (mg)	339±125	300±149	309±164	0.1	315
Methotrexate (% taking)	5.4	10.4	25	0.4	10.3
MMF (% taking)	5.6	4.2	0.0	0.4	4.2
AZA (% taking)	55.6	28.6	27.3	0.2	37.3

Data presented as number±SD unless indicated as percentages. Serological markers are reported as per cent of patients ever positive for the respective auto-antibodies.

ARB, angiotensin II receptor blockers; ASA, aspirin; AZA, azathioprin; dsDNA, antidouble-stranded DNA antibodies; HCQ, hydroxychloroquine; La, anti-SSB/La (48) antibodies; MMF, mycophenolate mofetil; n, number; RNP, anti-U1RNP antibodies; Ro, anti-SSA/Ro (52 or 60) antibodies; RV, risk variant; Smith, anti-Smith antibodies.

**Table 2** Cohort patients ethnicities and *APOL1* allelic frequencies

Ethnicity	Genotype			Allele frequency			Total N (%)
	0 RV	1 RV	2 RV	G0	G1	G2	
	N (%)	N (%)	N (%)				
Akan	13 (33.3)	23 (46.0)	6 (50)	0.58	0.25	0.17	42 (42)
Ga	9 (23.1)	10 (20.0)	2 (16.7)	0.67	0.26	0.02	21 (21)
Ewe	15 (38.5)	11 (22.0)	2 (16.7)	0.73	0.11	0.12	28 (28)
Northern Tribe	1 (2.6)	5 (10.0)	1 (8.3)	0.56	0.38	0.06	8 (8)
Other	0	1 (2.0)	1 (8.3)	0.25	0.50	0.25	2 (2)
<b>Total</b>	<b>38 (100)</b>	<b>50 (100)</b>	<b>12 (100)</b>	<b>0.64</b>	<b>0.24</b>	<b>0.12</b>	<b>100</b>

Self-reported patient ethnicities of the cohort are reported and *APOL1* genotype by ethnic group is shown. Values are expressed as N (number) and %. Allelic frequencies are represented within the ethnic group (rows) and across ethnic groups (columns). *APOL1*, apolipoprotein L1; RV, risk variant.

### Statistical analysis

To test the association between *APOL1* genotype and SLE outcomes, we treated *APOL1* genotype as the predictive variable (coded Number\_Alleles) and composite SDI, renal function and case fatality as outcome variables (coded SLICC, Renal and Mort, respectively). The associations between primary predictor and outcome variables were tested using Poisson regression for the SLICC damage and generalised estimation equations (GEE) to identify factors associated with the composite renal function measure overtime. The distribution of sex, age, SELENA-SLEDAI score, disease duration, kidney function and SLE criteria were assessed across genotype. Factors that associated with the outcome variables at a significance level <0.10 were treated as co-variables; they included the clinical SELENA-SLEDAI score, disease duration and a renal function composite score obtained by performing a factor analysis of mean arterial pressure (MAP), estimated glomerular filtration rate (eGFR) and proteinuria on urine dipstick followed by a varimax rotation.<sup>31 32</sup> The factor analysis was performed using data from the first visit. The eigenvector and the rotation matrix from this analysis was then used to derive the composite scores at the second and third visit.

Complete case and analyses are presented as the primary result; however, given the high rates of missing data, especially at the third visit, results from analyses using multiple imputations are also presented. Multiple imputation was performed assuming missing at random and monotone missingness. Results from the imputed datasets were combined using Rubin's approach as implemented in the SAS V.9.4 MIANALYZE procedure.<sup>33 34</sup> Analyses were performed using R 3.6.3 or SAS V.9.4.

## RESULTS

### Characteristics of the cohort

We enrolled 100 outpatients who met inclusion criteria and were consented to participate at Korle bu Teaching Hospital in Accra, Ghana during their routine clinical

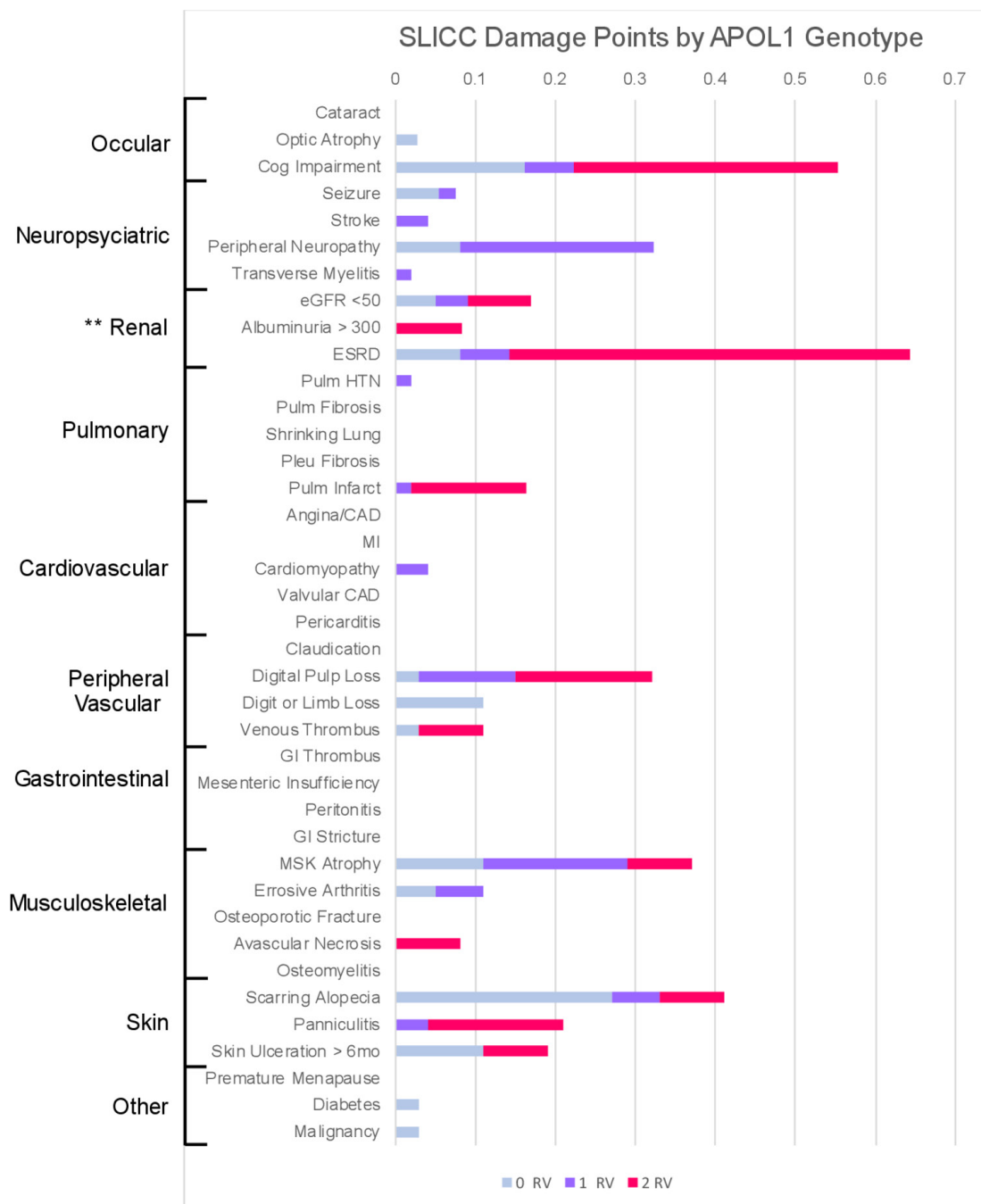
care. Demographic characteristics are shown in table 1. The mean±SD age was 32±9.4 years and 99% of the patients self-identified as female. The most common ethnic groups were Akan (42%) followed by Ewe (28%) and Ga (20%) representing 90% of the study participants.

On average, patients had a disease duration of 2.3±2.3 years at the baseline. The reported time from symptom development to diagnosis was 8.5±15.8 months. The most common ACR criteria was arthritis (77%), followed by lupus nephritis (53%), serositis (50%) and haematological disorder (50%; table 1). Of the cohort, 76% had ANAs completed for the purposes of clinical care with a median titre of 1:320 and a range from 1:40 to 1:5120. The remaining 24% were diagnosed clinically. On testing sera in the NYU clinical laboratory, 93% of patients were ANA positive. The most common autoantibodies were RNP, Smith, dsDNA and Ro, which were positive in 65%, 56%, 56% and 54% of the cohort, respectively (table 1). The most commonly used medications were glucocorticoids (92%) and hydroxychloroquine (87%). Non-steroidal anti-inflammatory drug (NSAID) use was also common with 73% of the cohort taking these drugs at baseline survey. The most common disease-modifying antirheumatic drugs (DMARDs) were azathioprine, cyclophosphamide and methotrexate with 37%, 13% and 10% of patients receiving these drugs.

### *APOL1* genotype associates with SLICC Damage Index

The average SDI was 1.1±1.5 (mean±SD) at enrollment; 54% of the cohort had a non-zero SDI with on average 2.3 years of SLE disease duration on enrolment. The frequencies of the ancestral G0 and risk variant (RV) G1 or G2 allele were 0.64, 0.21 and 0.12, respectively, and the allele distribution did not deviate from Hardy Weinberg Equilibrium (p=0.2, table 2).

*APOL1* high-risk (2RV) patients exhibited numerically higher SDI, compared with patients with zero or one variant, although this did not reach statistical significance (mean SDI 0RV or 1RV=0.99±1.2 vs 2RV=1.75±2.6, p=0.1).



**Figure 1** SLICC Damage Index (SDI) across APOL1 genotype: stacked bar chart visualising the mean SDI points accrued by genotype group (0RV in blue, 1RV in orange, 2RV in grey). Each damage criterion is ordered by affected organ system (shown to the left). APOL1, apolipoprotein L1; RV, risk variant.

*APOL1* high-risk patients accrued more SDI points in renal, cardiac and neurological domains (figure 1). To model SDI points accrued by genotype, a Poisson regression with a logarithmic link was used (table 3). In the unadjusted model, 2RV patients showed an 81.3% (95% CI 12.3 to 192.7) higher SDI compared with *APOL1* low-risk (1RV or 0RV) patients. In the first model adjusted for average SLEDAI score, the increase was 72.2% (95% CI 6.5 to 178.3) among 2RV patients, relative to 0RV or 1RV patients. An increase of one unit in the 12-month average SLEDAI score corresponded to a 4.7% (95%

CI 2.0 to 7.3%) increase in the SLICC damage score (table 3). Further adjustment for disease duration in the third model did not change this result (1.5%, 95% CI -6.5 to 10.2). Unadjusted and adjusted model summaries including both complete case data and data with imputed values are shown in table 3.

#### ***APOL1* genotype is associated with renal function**

A higher proportion of 2RV patients had 2+ or greater proteinuria scores on urine dipstick at baseline, 6 months and 12 months (figure 2A). These patients also exhibited

**Table 3** *APOL1* genotype associates with SLICC Damage Index

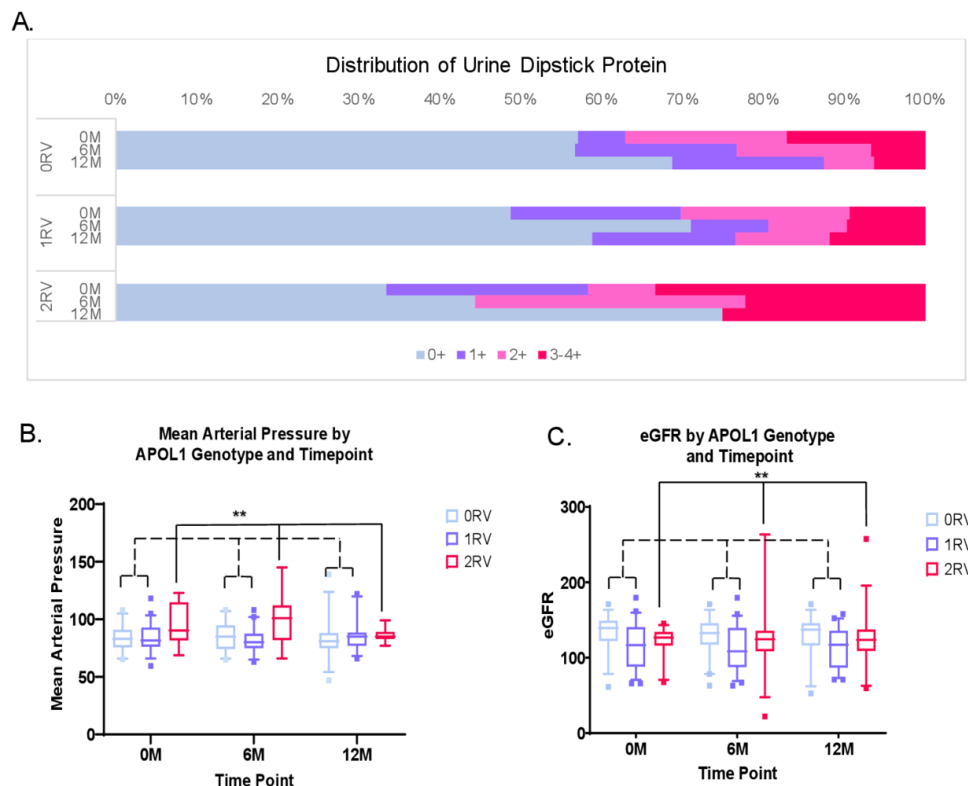
Model	Observed data		Imputed analysis	
	Per cent change (95% CI)	P value	Per cent change (95% CI)	P value
<b>Unadjusted Poisson regression model (recessive)</b>				
0RV or 1RV vs 2RV	81.3 (12.3 to 192.7)	0.01	78.4 (10.6 to 187.8)	0.02
<b>Poisson regression model (recessive) to adjusted for SLEDAI</b>				
0RV or 1RV vs 2RV	72.2 (6.5 to 178.3)	0.03	69.5 (4.9 to 173.8)	0.03
Average SLEDAI	4.7 (1.9 to 7.7)	0.001	4.7 (1.8 to 7.6)	0.001
<b>Poisson regression model (recessive) to adjusted for SLEDAI and duration of SLE</b>				
0RV or 1RV vs 2RV	80.8 (11 to 194.4)	0.01	77.7 (9.2 to 189.1)	0.02
Average SLEDAI	4.2 (1.1 to 7.4)	0.008	4.2 (1.1 to 7.3)	0.008
Disease duration	1.5 (−6.5 to 10.2)	0.72	1.5 (−6.5 to 10.1)	0.73

Per cent change (rate of change) and 95% CI for the unadjusted Poisson regression model, as well as two adjusted Poisson regression models are shown. Results are shown for the complete case analysis (observed data, excluding missing values) and following multiple imputations, assuming missing at random (imputed analysis).

APOL1, apolipoprotein L1; RV, risk variant; SLEDAI, Systemic Lupus Erythematosus Disease Activity Index.;

higher MAP at each time point, and lower eGFR as measured by the Chronic Kidney Disease Epidemiology Collaboration (CKD-EPI) formula ( $p=0.01$  for each outcome MAP and eGFR; [figure 2B and C](#)). During the 12-month period, of the five patients who progressed to ESRD as

defined by  $eGFR \leq 15 \text{ mL/min/1.73 m}^2$  or referral for haemodialysis, three were 2RV carriers. Assuming a recessive mode of inheritance, carrying 2RV in *APOL1* is associated with developing ESRD (OR=14 (95% CI 2.1 to 95.2);  $p=0.008$ ).



**Figure 2** Distribution of kidney function parameters by APOL1 genotype and time point. (A) The bars represent the proportion of patients in each urine dipstick range (0+–3–4+). The x-axis represents percentages, and the y-axis represents the genotype groups by time point (0M=month zero, 6M=month 6, 12M=month 12). At each time point, the proportion of patients in the higher dipstick proteinuria ranges was higher in the 2RV patients. These differences did not reach statistical significance. (B) The box plots represent the distribution of mean arterial pressure (mm Hg) values by genotype groups and time point. Overall, 2RV patients exhibited significantly higher mean arterial pressure values ( $p=0.01$ ). (C) The box plots represent the distribution of mean eGFR (mL/min) values by genotype groups and time point. Overall, 2RV patients exhibited significantly lower eGFR values ( $p=0.01$ ). \*\* $P=0.01$ . APOL1, apolipoprotein L1; eGFR, estimated glomerular filtration rate; RV, risk variant.

**Table 4** APOL1 genotype associates with renal function

Model	Observed data		Imputed analysis	
	Estimate (95% CI)	P value	Estimate (95% CI)	P value
<b>Linear regression model (recessive)</b>				
2RV vs 0RV or 1RV	-0.76 (-1.35 to -0.16)	0.01	-0.73 (-1.42 to -0.04)	0.04
<b>Linear regression model (recessive) adjusted for SDI</b>				
2RV vs 0RV or 1RV	-0.63 (-1.1 to -0.16)	0.01	-0.6 (-1.14 to -0.05)	0.03
SDI	-0.17 (-0.29 to -0.04)	0.01	-0.17 (-0.31 to -0.02)	0.02
<b>Linear regression model (recessive) adjusted for SDI and duration of SLE</b>				
2RV vs 0RV or 1RV	-0.64 (-1.12 to -0.16)	0.01	-0.61 (-1.16 to -0.06)	0.03
SDI	-0.18 (-0.31 to -0.05)	0.01	-0.18 (-0.33 to -0.02)	0.02
Disease duration	-0.05 (-0.11 to 0.02)	0.14	-0.05 (-0.12 to 0.02)	0.18

Table shows the association between APOL1 genotype and renal function as measured by a weighted average of dipstick proteinuria, mean arterial pressure and eGFR. Parameter estimates (Estimate) and 95% CI are presented for the unadjusted linear regression model with generalised estimating equation to account for repeated observations followed by adjustment for SDI and duration of SLE. Models were fitted in the observed data, excluding missing observation and imputed datasets, assuming missing at random.

APOL1, apolipoprotein L1; eGFR, estimated glomerular filtration rate; RV, risk variant; SDI, SLICC damage index.;

To capture the effect of 2RV status on urine dipstick proteinuria, MAP and lower eGFR, a weighted average of each variable was created to fully represent kidney function. This weighted average was designated as a composite variable called 'factor one', which was proportional to kidney function and computed with the following loadings:  $\text{factor one} = (-0.67 \times \text{MAP}) - (0.28 \times \text{dipstick protein}) + (0.63 \times \text{eGFR})$ . In the GEE model, APOL1 variants associated with a decrease in the renal factor one (-0.76, 95% CI -1.35 to -0.16). On controlling for SDI, this association between APOL1 variants and factor one remained (-0.63, 95% CI -1.1 to -0.16). Lastly, this association was not mitigated by disease duration (table 4).

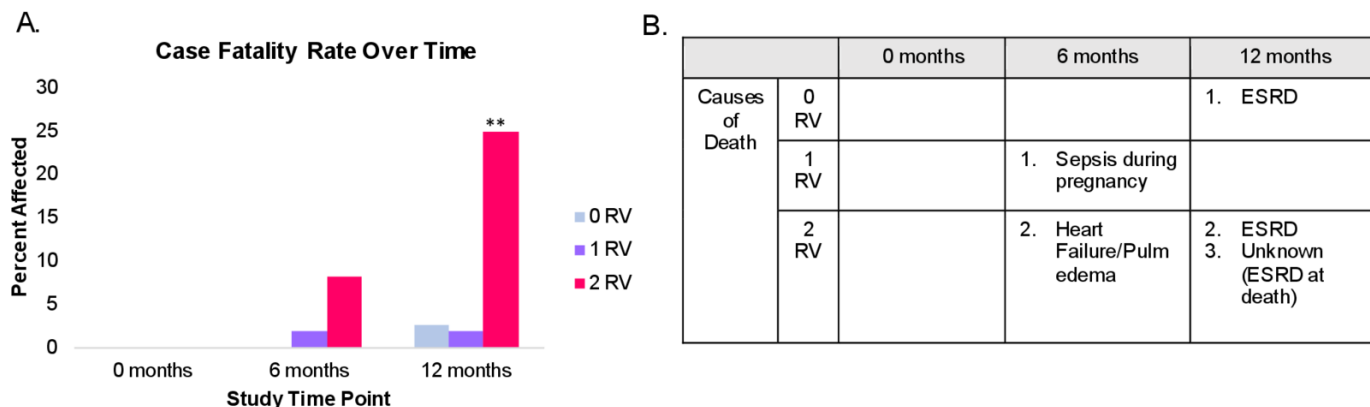
### APOL1 genotype is associated with case fatality

The case fatality rate was significantly higher in 2RV patients. Over 12 months, 2.3% (2 out of 88) patients with 0RV or 1RV died compared with 25% (3 out of 12) 2RV patients corresponding with an OR of 13.6 (95% CI 1.4 to 182.6). Deaths in the 0RV or 1RV group were due to

ESRD and sepsis during pregnancy. In the 2RV patients, deaths were due to ESRD and heart failure. Case fatality rate and causes of death are summarised in figure 3. The association between the APOL1 high-risk genotype and case fatality remained on controlling for average SLEDAI at an OR of 14.8 (95% CI 2.0 to 109.4). Taken together, these data suggest that APOL1 high-risk genotype is a contributor to SLE mortality independent of disease activity.

### DISCUSSION

The central findings in our study were that carrying 2RV was associated with proteinuria, higher MAP and lower average eGFR levels despite similar SLE activity measures. Compared with the 0RV and 1RV patients, the 2RV group accumulated more points on the SDI both in renal domains and in those suggesting microvascular disease including cognitive impairment, digital pulp loss and panniculitis. The case fatality rate in 2RV carriers was



**Figure 3** Case fatality rate by APOL1 genotype. (A) Bars represent each genotype group (0RV, 1RV or 2RV). The y-axis represents the percentage of patients in that genotype group who died, and the x-axis shows the study time point. \*\*P<0.01. (B) Table represents the causes of death at each time point by genotype group. APOL1, apolipoprotein L1; ESRD, end-stage renal disease; Pulm, pulmonary; RV, risk variant.

13.6-fold that of the 0RV or 1RV carriers on controlling for SLE disease activity. Deaths in the 2RV patients were due to ESRD and heart failure, consistent with previously identified *APOLI* variant-associated phenotypes. Importantly, the *APOLI* risk genotype correlated with SDI, renal progression and case fatality independent of SLE disease activity, suggesting that in Ghanaian patients with SLE, these variants may be significant prognostic indicators.

Associations between the *APOLI* high-risk genotype and non-diabetic kidney disease by multiple causes have been consistent with recent reports of early onset renal disease in West Africa.<sup>2 3 6 10 35 36</sup> Notably, reports from Ghana indicate that the *APOLI* high-risk genotype is associated with small vessel ischaemic stroke, a risk factor for cognitive impairment.<sup>9</sup> In the USA, reports implicate the *APOLI* high-risk genotype in extrarenal phenotypes including pre-eclampsia and non-diabetic microvascular stroke.<sup>37–39</sup> The current study adds to the understanding of *APOLI* high-risk genotype manifestations in SLE. In addition to renal domains, 2RV patients accrued more damage due to cognitive impairment, pulmonary infarction and digital pulp loss.

SLE is an extremely heterogeneous disease, with variation in clinical manifestations, race and ethnicity, disease onset, medication requirements and disease activity all contributing to morbidity and mortality.<sup>25 40 41</sup> Patients with SLE of African ancestry have been shown to accrue more organ damage, and suffer with more comorbidities than patients of European ancestry.<sup>41 42</sup> These differences are multifactorial and thought to be largely driven by socioeconomic factors, however genetics may also play a role.<sup>43–45</sup> Genetic susceptibility to early damage accrual, particularly in renal and cardiovascular domains, is implicated in early SLE deaths.<sup>46</sup> Recently, a Swedish group found that a higher cumulative genetic risk score spanning 57 SLE-associated loci was implicated in SLE onset, severity, organ damage and death; however, *APOLI* was not identified likely due to a lack of patients with African continental ancestry.<sup>46</sup> The current study highlights the need to perform additional genetic susceptibility analyses in patients with SLE of diverse ancestral backgrounds.

Several sub-Saharan African case series have identified high SLE-related morbidity and mortality due to infections and cardiorenal disease.<sup>22 23 47</sup> While epidemiological studies on the African continent are sparse, individuals of recent African ancestry throughout the diaspora have some of the highest reported incidence and prevalence of SLE.<sup>48 49</sup> This trend is compounded by higher morbidity and mortality due to renal, neurological and cardiovascular disease.<sup>40 41 48 49</sup> In the USA, SLE ranked among the top 10 causes of death in African-American women from the second through fifth decades of life.<sup>50</sup> Moreover, African-American patients with SLE have demonstrably higher prevalent comorbid hypertensive, renal and cardiovascular disease compared with their European American counterparts.<sup>42</sup> Damage accrual on renal and cardiovascular domains of the SDI are independent risk factors for early SLE mortality.<sup>25</sup> While many

socioeconomic factors are at play, the observed association between these critical outcomes and *APOLI* risk genotype in SLE may be an underappreciated genetic contribution.

The current study is not without limitations. Given SLE disease heterogeneity, other genetic, treatment and environmental factors contribute to damage accrual, kidney disease susceptibility and mortality. This highlights the need for genome-wide association studies in a continental African SLE population. The generalisability of the findings is limited by the small sample size with 12% of participants in the 2RV group. Larger studies are necessary to better understand the associations between the *APOLI* polymorphisms and systemic disease. Patients were often unable to afford or obtain laboratory studies at each visit, thus limiting longitudinal laboratory data. This could have underestimated SLE activity based on available disease measures.<sup>51</sup> In addition, high 1-year mortality could be attributed to limited access to DMARDs and life-saving dialysis treatments. Study patients commonly used NSAIDs and corticosteroids both of which have adverse cardiorenal effects. However, this phenomenon influenced all study patients across genotype groups. Despite these limitations, this novel sub-Saharan African study offers important information regarding *APOLI* risk phenotypes in SLE.

## CONCLUSION

These data implicate *APOLI* high-risk genotype in SLE renal progression, extrarenal damage accrual and mortality in this Ghanaian SLE cohort. Furthermore, we identify a potential genetic associations with high SLE-associated mortality in sub-Saharan Africa. Additional research is required to determine the utility and cost-effectiveness of *APOLI* genotyping in patients with SLE of recent African ancestry for risk stratification and disease prevention.

### Author affiliations

<sup>1</sup>Department of Medicine, Division of Rheumatology, NYU Langone Health, New York, New York, USA

<sup>2</sup>Department of Medicine, Division of Rheumatology, University of Ghana, Legon, Greater Accra, Ghana

<sup>3</sup>Philadelphia College of Osteopathic Medicine, Philadelphia, Pennsylvania, USA

<sup>4</sup>Internal Medicine, University of Ghana, Legon, Greater Accra, Ghana

<sup>5</sup>Columbia University, New York, New York, USA

<sup>6</sup>Department of Medicine, Rutgers Robert Wood Johnson Medical School, Piscataway, New Jersey, USA

<sup>7</sup>Department of Biostatistics, Division of Health Sciences Research, NYU Winthrop Hospital, Mineola, New York, USA

**Correction notice** This article has been corrected since it first published. The provenance and peer review statement has been included.

**Twitter** Ashira Blazer @Ashira\_MD

**Acknowledgements** The authors would like to thank the Buyon/Clancy laboratory where genotyping work was completed for this project, and the advice of mentors and peers including Drs Jill Buyon, Robert Clancy, Timothy Niewold, Greg Silverman, Janina Jeff and Peter Izmirly. The authors would also like to thank the patients who participated in this study, and The Rheumatology Initiative that allowed the team to collaborate with, educate and support patients with SLE in Accra, Ghana.

**Contributors** Each author made substantial contributions to conception (AB, IDD, JN), data acquisition and analysis (AB, MR, FA, JD) and/or drafting the work (AB, HA, TA). In addition, all authors have approved the submitted version of this manuscript, and have agreed to be personally accountable for his or her own contributions.

**Funding** This project was supported in part by the Rheumatology Research Foundation Scientist Development Award to AB; the National Centre for the Advancement of Translational Science (NCATS) (KL2 1UL1TR001445) to AB and The Judith & Stewart Colton Centre for Autoimmunity Scholar Award to AB.

**Competing interests** None declared.

**Patient and public involvement** Patients and/or the public were involved in the design, or conduct, or reporting, or dissemination plans of this research. Refer to the 'Methods' section for further details.

**Patient consent for publication** Not required.

**Ethics approval** All study participants signed informed consent prior to participating in this study. Ethics approval was granted by The University of Ghana Ethics Board. This study was conducted in compliance with the Declaration of Helsinki.

**Provenance and peer review** Not commissioned; externally peer reviewed.

**Data availability statement** Data are available on reasonable request.

**Open access** This is an open access article distributed in accordance with the Creative Commons Attribution Non Commercial (CC BY-NC 4.0) license, which permits others to distribute, remix, adapt, build upon this work non-commercially, and license their derivative works on different terms, provided the original work is properly cited, appropriate credit is given, any changes made indicated, and the use is non-commercial. See: <http://creativecommons.org/licenses/by-nc/4.0/>.

#### ORCID iD

Ashira Blazer <http://orcid.org/0000-0002-0386-5259>

## REFERENCES

- Limou S, Nelson GW, Kopp JB, *et al.* APOL1 kidney risk alleles: population genetics and disease associations. *Adv Chronic Kidney Dis* 2014;21:426–33.
- Freedman BI, Langefeld CD, Andringa KK, *et al.* End-Stage renal disease in African Americans with lupus nephritis is associated with APOL1. *Arthritis Rheumatol* 2014;66:390–6.
- Papeta N, Kiryluk K, Patel A, *et al.* APOL1 variants increase risk for FSGS and HIVAN but not IgA nephropathy. *J Am Soc Nephrol* 2011;22:1991–6.
- Kruzel-Davila E, Wasser WG, Aviram S, *et al.* APOL1 nephropathy: from gene to mechanisms of kidney injury. *Nephrol Dial Transplant* 2016;31:349–58.
- Ko W-Y, Rajan P, Gomez F, *et al.* Identifying Darwinian selection acting on different human APOL1 variants among diverse African populations. *Am J Hum Genet* 2013;93:54–66.
- Ekulu PM, Nkoy AB, Betukumesu DK, *et al.* APOL1 Risk Genotypes Are Associated With Early Kidney Damage in Children in Sub-Saharan Africa. *Kidney Int Rep* 2019;4:930–8.
- Sumaili EK, Shemer R, Kruzel-Davila E, *et al.* G1 is the major APOL1 risk allele for hypertension-attributed nephropathy in Central Africa. *Clin Kidney J* 2019;12:188–95.
- Ulasi II, Tzur S, Wasser WG, *et al.* High population frequencies of APOL1 risk variants are associated with increased prevalence of non-diabetic chronic kidney disease in the Igbo people from south-eastern Nigeria. *Nephron Clin Pract* 2013;123:123–8.
- Akinyemi R, Tiwari HK, Arnett DK, *et al.* APOL1, CDKN2A/CDKN2B, and HDAC9 polymorphisms and small vessel ischemic stroke. *Acta Neurol Scand* 2018;137:133–41.
- Parsa A, Kao WHL, Xie D, *et al.* APOL1 risk variants, race, and progression of chronic kidney disease. *N Engl J Med* 2013;369:2183–96.
- Kopp JB, Nelson GW, Sampath K, *et al.* APOL1 genetic variants in focal segmental glomerulosclerosis and HIV-associated nephropathy. *J Am Soc Nephrol* 2011;22:2129–37.
- Larsen CP, Beggs ML, Saeed M, *et al.* Apolipoprotein L1 risk variants associate with systemic lupus erythematosus-associated collapsing glomerulopathy. *J Am Soc Nephrol* 2013;24:722–5.
- Vajgel G, Lima SC, Santana DJS, *et al.* Effect of a single apolipoprotein L1 gene nephropathy variant on the risk of advanced lupus nephritis in Brazilians. *J Rheumatol* 2020;47:1209–17.
- Blazer A, Wang B, Simpson D, *et al.* Apolipoprotein L1 risk variants associate with prevalent atherosclerotic disease in African American systemic lupus erythematosus patients. *PLoS One* 2017;12:e0182483.
- Langefeld CD, Comeau ME, Ng MCY, *et al.* Genome-Wide association studies suggest that APOL1-environment interactions more likely trigger kidney disease in African Americans with nondiabetic nephropathy than strong APOL1-second gene interactions. *Kidney Int* 2018;94:599–607.
- Nichols B, Jog P, Lee JH, *et al.* Innate immunity pathways regulate the nephropathy gene apolipoprotein L1. *Kidney Int* 2015;87:332–42.
- Ashira Blazer SR, Markham A, Mehta-Lee S, *et al.* Interferon-Induced APOL1 over-expression causes autophagic dysfunction and mitochondrial stress in risk Variant-Carrying endothelial cells. *Arthritis Rheumatol* 2017;69.
- Vanhollebeke B, Pays E. The function of apolipoproteins L. *Cell Mol Life Sci* 2006;63:1937–44.
- Ma L, Divers J, Freedman BI. Mechanisms of injury in APOL1-associated kidney disease. *Transplantation* 2019;103:487–92.
- Thomson R, Finkelstein A. Human trypanolytic factor APOL1 forms pH-gated cation-selective channels in planar lipid bilayers: relevance to trypanosome lysis. *Proc Natl Acad Sci U S A* 2015;112:2894–9.
- Gupta N, Wang X, Wen X, *et al.* Domain-Specific antibodies reveal differences in the membrane topologies of apolipoprotein L1 in serum and podocytes. *J Am Soc Nephrol* 2020;31:2065–82.
- IDB D, Atiase Y, Yorke E. *Rheumatology in Ghana- a paradigm change*. Internal Medicine Practice in Ghana: Challenges, Innovations, and Future Directions: Margaret Lartey, Timothy Archampong, and Michael O Mate-Kole, 2015: 7–21.
- Dzifa D, Boima V, Yorke E, *et al.* Predictors and outcome of systemic lupus erythematosus (SLE) admission rates in a large teaching hospital in sub-Saharan Africa. *Lupus* 2018;27:336–42.
- Tan EM, Cohen AS, Fries JF, *et al.* The 1982 revised criteria for the classification of systemic lupus erythematosus. *Arthritis Rheum* 1982;25:1271–7.
- Chambers SA, Allen E, Rahman A, *et al.* Damage and mortality in a group of British patients with systemic lupus erythematosus followed up for over 10 years. *Rheumatology* 2009;48:673–5.
- Gladman DD, Ibañez D, Urowitz MB. Systemic lupus erythematosus disease activity index 2000. *J Rheumatol* 2002;29:288–91.
- Touma Z, Gladman DD, Ibañez D, *et al.* Development and initial validation of the systemic lupus erythematosus disease activity index 2000 Responder index 50. *J Rheumatol* 2011;38:275–84.
- Thanou A, James JA, Arriens C, *et al.* Scoring systemic lupus erythematosus (SLE) disease activity with simple, rapid outcome measures. *Lupus Sci Med* 2019;6:e000365.
- Petri M, Kim MY, Kalunian KC, *et al.* Combined oral contraceptives in women with systemic lupus erythematosus. *N Engl J Med* 2005;353:2550–8.
- Desplat-Jego S, Bardin N, Larida B, *et al.* Evaluation of the BioPlex 2200 ANA screen for the detection of antinuclear antibodies and comparison with conventional methods. *Ann N Y Acad Sci* 2007;1109:245–55.
- Kaiser HF. The varimax criterion for analytic rotation in factor analysis. *Psychometrika* 1958;23:187–200.
- Fabrigar LR, Wegener DT. *Exploratory factor analysis*. New York, NY, US: Oxford University Press, 2012: viii, 159–viii, p.
- Rubin DB. Multiple imputation after 18+ years. *J Am Stat Assoc* 1996;91:473–89.
- RUBIN DB. Inference and missing data. *Biometrika* 1976;63:581–92.
- Woroniecki RP, Ng DK, Limou S, *et al.* Renal and Cardiovascular Morbidities Associated with APOL1 Status among African-American and Non-African-American Children with Focal Segmental Glomerulosclerosis. *Front Pediatr* 2016;4:122.
- Freedman BI, Kopp JB, Langefeld CD, *et al.* The apolipoprotein L1 (APOL1) gene and nondiabetic nephropathy in African Americans. *J Am Soc Nephrol* 2010;21:1422–6.
- Reidy KJ, Hjorten RC, Simpson CL, *et al.* Fetal-Not Maternal-APOL1 genotype associated with risk for preeclampsia in those with African ancestry. *Am J Hum Genet* 2018;103:367–76.
- Bruggeman LA, Wu Z, Luo L, *et al.* APOL1-G0 or APOL1-G2 transgenic models develop preeclampsia but not kidney disease. *J Am Soc Nephrol* 2016;27:3600–10.
- Gutiérrez OM, Irvin MR, Chaudhary NS, *et al.* APOL1 Nephropathy Risk Variants and Incident Cardiovascular Disease Events in Community-Dwelling Black Adults. *Circ Genom Precis Med* 2018;11:e002098.
- Durán S, González LA, Alarcón GS. Damage, accelerated atherosclerosis, and mortality in patients with systemic lupus erythematosus: lessons from LUMINA, a multiethnic US cohort. *J Clin Rheumatol* 2007;13:350–3.

- 41 Petri M, Purvey S, Fang H, *et al.* Predictors of organ damage in systemic lupus erythematosus: the Hopkins lupus cohort. *Arthritis Rheum* 2012;64:4021–8.
- 42 Barnado A, Carroll RJ, Casey C, *et al.* Phenome-wide association study identifies marked increased in burden of comorbidities in African Americans with systemic lupus erythematosus. *Arthritis Res Ther* 2018;20:69.
- 43 Lewis MJ, Jawad AS. The effect of ethnicity and genetic ancestry on the epidemiology, clinical features and outcome of systemic lupus erythematosus. *Rheumatology* 2017;56:167–77.
- 44 Chae DH, Martz CD, Fuller-Rowell TE, *et al.* Racial discrimination, disease activity, and organ damage: the black women's experiences living with lupus (BeWELL) study. *Am J Epidemiol* 2019;188:1434–43.
- 45 Jordan J, Thompson NJ, Dunlop-Thomas C, *et al.* Relationships among organ damage, social support, and depression in African American women with systemic lupus erythematosus. *Lupus* 2019;28:253–60.
- 46 Reid S, Alexsson A, Frodlund M, *et al.* High genetic risk score is associated with early disease onset, damage accrual and decreased survival in systemic lupus erythematosus. *Ann Rheum Dis* 2020;79:363–9.
- 47 Adelowo OO, Umeizudike T, Olaosebikan H, *et al.* Nephritis as an initial diagnosis of lupus in Nigerian patients. *Afr J Med Med Sci* 2014;43:99–105.
- 48 Izmirlly PM, Wan I, Sahl S, *et al.* The incidence and prevalence of systemic lupus erythematosus in New York County (Manhattan), New York: the Manhattan lupus surveillance program. *Arthritis Rheumatol* 2017;69:2006–17.
- 49 Alarcón GS. Lessons from LUMINA: a multiethnic US cohort. *Lupus* 2008;17:971–6.
- 50 Yen EY, Singh RR. Brief report: Lupus-An unrecognized leading cause of death in young females: a population-based study using nationwide death certificates, 2000–2015. *Arthritis Rheumatol* 2018;70:1251–5.
- 51 Dey D. Juggling art: making critical clinical decisions without vital laboratory support in autoimmune rheumatic patients in a resource poor setting. *Ghana Med J* 2017;51:47–9.