

AI MADE EASY SERIES

Responsible Artificial Intelligence for Business and Government in Africa

RICHARD BOATENG

Responsible Artificial Intelligence for Business and Government in Africa

richard boateng

Responsible Artificial Intelligence for Business and Government in Africa

Richard Boateng

"Responsible Artificial Intelligence for Business and Government in Africa" provides a comprehensive and practical guide for businesses and policymakers operating in Africa. It equips readers with the knowledge and tools to develop and implement responsible AI policies that uphold ethical standards, foster innovation, and contribute to the sustainable growth of organizations and the continent as a whole. A highlight of the book is the exploration of best practices for implementing responsible AI policies within organizations and institutions. It underscores the importance of establishing clear guidelines for AI development and deployment, implementing ethical review processes, conducting comprehensive employee training programs, and fostering collaborations with external experts and organizations. Looking into the future and emerging trends, it also addresses AI addiction and empowering women into AI.

Copyright © Richard Boateng

Publisher

Office of Research, Innovation and Development,
University of Ghana, Legon, Accra Ghana.
Under the auspices of the University of Ghana Building Stronger
Universities Programme III
Contact: Prof. Richard Boateng. Email: richboateng@ug.edu.gh

Cover Design and Typeset:
Prof. Richard Boateng
Email: richboateng@ug.edu.gh

Printed by:
University of Ghana

Author Contact:
Prof. Richard Boateng
Email: richboateng@ug.edu.gh

Ghana Library Cataloguing-in-Publication Data

Responsible artificial intelligence for business and government in Africa
/Richard Boateng.

– Accra: Research, Innovation & Development-UG, 2023.

1. Artificial Intelligence

I. Title

DDC 006.3 - - dc 21

ISBN: 978-9988-3-6052-8 (ebook)

GLCN – 313

*To God Be The Glory
Just By Your Grace*

*To My Wife, Daughter and Son
You Mean The World To Me*



ARTIFICIAL INTELLIGENCE MATTERS

CONTENTS

CONTENTS.....	v
Preface and Acknowledgments	1
Foreword.....	4
Chapter 1: Introduction to Responsible AI Policies	6
Getting Started	7
So, What is Artificial Intelligence?	7
Comparing Definitions of AI	7
So, Where Can We Find AI?.....	8
How AI is Positively Impacting Africa.....	10
Broad Categories of AI	14
Notable Emerging Forms of AI	16
So What is Responsible AI?	18
Importance of AI Policies for Businesses.....	19
Potential Risks of AI in Africa	20
Misconceptions About AI	22
Practice Question 1	24
Practice Question 2	24
Synopsis of Chapters	25
Chapter Summary	27
Chapter 2: Understanding the Ethical Implications of AI.....	29
Emerging Challenges to AI Adoption in Africa	30
Ethical Concerns in AI Development and Deployment	33
Potential Risks and Biases Associated with AI Technologies:	34
The Need for Responsible AI Policies	38

Practice Question 3	39
Practice Question 4	39
Chapter Summary.....	40
Chapter 3: Key Principles for Responsible AI Policies	41
Transparency and Explainability of AI Algorithms	42
Practice Question 5	45
Practice Question 6	45
Privacy and Data Protection in AI Systems	46
Accountability and Responsibility in AI Development and Use:	47
Chapter Summary.....	48
Chapter 4: Legal and Regulatory Landscape for AI	49
Overview of National and International Laws and Regulations	50
National Laws	50
Online Resources on National AI Policies.....	57
International Laws and Guidelines.....	65
The SMARTAfrica Blueprint for AI in Africa	66
UNESCO’s Human Rights Approach to AI	67
OECD Council Recommendation on Artificial Intelligence– OECD/LEGAL/0449	70
Impact of GDPR and Other Data Protection Regulations on AI Policies	79
Lawful Basis and Data Minimization.....	79
Rights of Data Subjects	79
Automated Decision-Making and Profiling	80
GDPR versus Data and Related Policies in Africa.....	81
Key Legal Considerations for Businesses in Developing AI Policies	82
Intellectual Property Rights	82

Liability and Accountability	82
Compliance with Sector-Specific Regulations.....	83
International Data Transfers	83
Key Considerations for AI Policy Development in Africa.....	85
Building Sustainable Local AI Ecosystems.....	85
Implications of AI Beyond Economic Dimensions.....	85
Stakeholder Engagement.....	85
Inclusivity and Differential Impact	86
Infrastructure Development	86
Regional Cooperation	86
Building Local Capacity and Skills.....	87
Community Participation and Beneficiation.....	87
Advancing African Value Systems and Principles in AI Ethics.....	87
International Development Assistance.....	88
Sovereignty in AI Governance	88
.....	88
Practice Question 7	89
Practice Question 8	89
Practice Question 9	89
Practice Question 10	89
Practice Question 11	90
Chapter Summary	90
Chapter 5: Steps to Develop Effective AI Policies	91
Assessing the AI Landscape and Identifying Potential Risks	92
Technology Assessment.....	92
Risk Assessment.....	92
Regulatory and Legal Compliance	93

Stakeholder Engagement and Consultation in Policy Development.	93
Internal Stakeholders:	93
External Stakeholders	94
Ethical and Domain Experts.....	94
Drafting and Implementing AI Policies in Line with Business Objectives.....	94
Policy Scope and Objectives	94
Policy Content	95
Policy Implementation	95
Monitoring and Updating AI Policies as Technologies Evolve	95
Continuous Monitoring	96
Emerging Technologies and Ethical Considerations.....	96
Regulatory and Legal Changes	96
Sample Policy 1: Responsible AI Policy for Baliija City Hospital.....	97
Policy Scope and Objectives	97
Policy Content	97
Policy Implementation	98
Practice Question 12	100
Practice Question 13	100
Sample Policy 2: Responsible AI Policy for the Ministry of Education of Akeswa, Aligned with UNESCO's Human Rights Approach to AI	101
Introduction	101
Principles	101
Conclusion	103
Sample Policy 3: Responsible AI Policy for an Innovation Hub	103
Introduction:	103
Principles	103

Implementation and Dissemination Plan	106
Sample Policy 4: Responsible AI Policy for a Bank	108
Introduction	108
Principles	108
Implementation and Dissemination Plan	110
Chapter Summary	111

Chapter 6: Best Practices for Implementing Responsible AI Policies 113

Establishing Clear Guidelines for AI Development and Deployment	114
Data Governance and Privacy	114
Bias Detection and Mitigation	114
Human Oversight and Decision-Making	115
Ethical Review Processes for AI Project	116
Ethics Committees or Review Boards	116
Ethical Impact Assessments	116
Training and Awareness Programs for Employees on Responsible AI Practices	118
Ethical AI Training	118
Data Privacy and Security Training	119
Collaborating with External Experts and Organizations in AI Policy Development	121
Engaging with Ethical AI Organizations	121
Industry Collaborations	121
Practice Question 14	123
Chapter Summary	123

Chapter 7: Case Studies: Successful Implementation of Responsible AI Policies 125

Google's AI Principles.....	126
Lessons Learned	126
Microsoft's AI for Accessibility	126
Lessons Learned:	127
OpenAI's Responsible AI Development Framework.....	128
Lessons Learned:	128
Practice Question 15	128
Analytics and AI Disasters	129
Chapter Summary.....	139
Chapter 8: Overcoming Challenges in AI Policy Implementation	140
Technical Challenges	141
Cultural Challenges	141
Organizational Challenges	142
Building a Culture of Responsible AI	142
Practice Question 16	145
Chapter Summary.....	146
Chapter 9: The Future of Responsible AI Policies	148
Emerging Trends and Advancements in AI Policy Frameworks.....	149
International Collaboration on AI Governance	149
Regulatory Sandboxes for AI Innovation	149
AI Impact Assessments	149
Practice Question 17	150
Anticipated Changes in Legal and Regulatory Landscapes	150
AI-Specific Regulations	150
Data Protection and Privacy Laws	153
Liability and Accountability	154

Ethical Considerations in Emerging Technologies.....	156
Ethical Considerations in Autonomous Systems.....	156
Ethical Considerations in AI Assistants	156
AI Addiction: Understanding the Dangers, Symptoms, and Path to Recovery	157
What is AI Addiction?	157
Dangers of AI Addiction:	157
Symptoms of AI Addiction:	158
Addressing AI Addiction:	159
Example Scenario: AI Addiction	160
Conclusion.....	160
Giving Women A Voice through Responsible AI.....	161
Strategies	161
Why it Matters to Give African Women A Voice.....	163
Chapter Summary	166
Chapter 10: Conclusion	169
Author Profile	171
Index	175

"Responsible AI is not just a technological pursuit; it is a moral imperative to shape a future that uplifts humanity, transcends biases, and nurtures collective well-being."

richard boateng

Preface and Acknowledgments

I am excited to announce the release of a groundbreaking book, "Responsible Artificial Intelligence for Business and Government in Africa," which provides valuable insights into the development and implementation of responsible AI policies. This book is essential reading for executives, policymakers, and technology enthusiasts who seek to navigate the ethical challenges of AI in the African context.

The book offers a comprehensive exploration of responsible AI, emphasizing its significance for businesses operating in Africa. It begins with an introduction to responsible AI policies, providing a solid foundation for readers to grasp the core concepts and themes that will be covered throughout the book.

The subsequent chapters delve deeper into the ethical implications of AI, addressing potential risks and biases associated with AI technologies. I highlight the urgent need for responsible AI policies that mitigate these concerns and ensure fairness, transparency, privacy, and accountability.

Legal and regulatory frameworks surrounding AI are examined in detail, with a focus on the impact of data protection regulations and the key considerations businesses must navigate. The book provides practical guidance on developing effective AI policies, offering a step-by-step approach that encompasses risk assessment, stakeholder engagement, drafting, implementation, and continuous monitoring.

A highlight of the book is the exploration of best practices for implementing responsible AI policies within organizations. It underscores the importance of establishing clear guidelines for AI development and deployment, implementing ethical review processes, conducting comprehensive employee training

programs, and fostering collaborations with external experts and organizations.

Drawing from real-world case studies and sample policies, readers gain invaluable insights into successful implementations of responsible AI policies across various industries. These case studies and sample policies provide actionable lessons for organizations seeking to emulate their success.

Recognizing the challenges that may arise during AI policy implementation, the book dedicates a chapter to addressing common hurdles and providing strategies for overcoming them. Technical, cultural, and organizational challenges are explored, ensuring readers are equipped to navigate these obstacles effectively.

Looking towards the future, the book discusses emerging trends and advancements in AI policy frameworks. It anticipates changes in the legal and regulatory landscapes and explores ethical considerations in emerging technologies, enabling readers to stay ahead of the curve. It also addresses AI Addiction and empowering women in AI.

In the concluding chapter, the book summarizes the key concepts and lessons from the book, underscoring the importance of developing responsible AI policies. Readers are encouraged to take action and prioritize responsible AI within their organizations to drive positive impact and ensure ethical and accountable AI practices.

"Responsible Artificial Intelligence for Business and Government in Africa" provides a comprehensive and practical guide for businesses and policymakers operating in Africa. It equips readers with the knowledge and tools to develop and implement responsible AI policies that uphold ethical standards, foster innovation, and contribute to the sustainable growth of organizations and the continent as a whole.

Don't miss the opportunity to explore the groundbreaking insights presented in this book. Stay ahead of the AI revolution and join the responsible AI movement in Africa.

Last but definitely not least, many thanks to my wife, Sheena Lovia Boateng, for her understanding, motivation and support. She is the inspiration for my writing and my life. Because of her, as a wife, supporter, and detailed and careful editor, this work has been made possible. To our children, Astrid and Victory, Mum and Dad, say we love you!

Foreword

Welcome to this enlightening journey into the world of responsible AI policies. In an era where artificial intelligence technologies are seamlessly integrating into our daily lives, the need for businesses to prioritize responsible practices has never been more critical. This book serves as a compass, guiding organizations towards the ethical implementation of AI systems and fostering a future that aligns with our shared values and aspirations.

As you embark on this captivating exploration, you will traverse a wealth of knowledge, insights, and practical guidance. From the very beginning, you will be introduced to the concept of responsible AI and its profound significance for businesses. The subsequent chapters will unravel the complex tapestry of ethical implications, key principles, legal considerations, and practical steps involved in developing and implementing responsible AI policies.

The author has painstakingly curated a collection of chapters that not only inform but inspire action. Through real-world case studies and best practices, they provide vivid examples of organizations that have had some challenges in charting this path and the lessons learnt. You will discover how these organizations mitigated challenges, overcame biases, and harnessed the transformative power of AI to create a positive social impact.

While reading this book, you will recognize that responsible AI policies are not mere regulatory checkboxes; they are an ethical imperative. They enable businesses to tread the path of fairness, transparency, and accountability. By establishing clear guidelines and incorporating human oversight, organizations can navigate the intricate terrain of AI with integrity and confidence.

But this book does not stop at providing knowledge; it urges you to take action. It implores organizations and governments to prioritize responsible AI by integrating ethics training and awareness programs into their fabric. It emphasizes the importance of collaboration with external experts and staying informed about emerging trends and changes in legal landscapes. By doing so, you can continuously adapt and ensure your policies remain robust and aligned with societal needs.

As you delve into the chapters, you will witness a vision of the future—one where responsible AI is not just a concept but a reality. This future is built upon a foundation of fairness, non-discrimination, and the collective pursuit of human well-being. By embracing responsible AI, we can unleash its potential to drive innovation, tackle societal challenges, and usher in a new era of equitable opportunities.

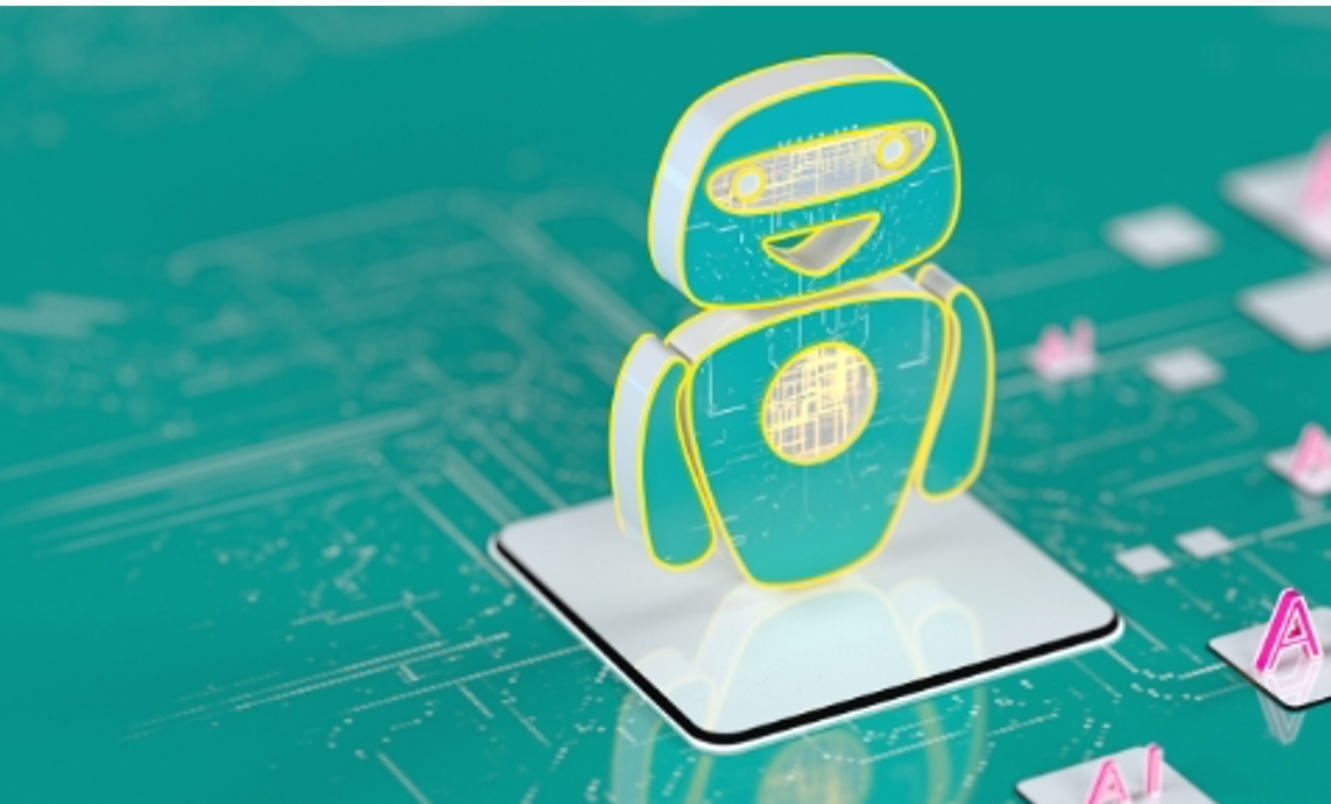
The author has crafted this book as a guide, but it is up to you, the reader, to embrace the principles and act upon them. Let its pages ignite a flame within you—a flame that compels you to advocate for responsible AI within your organization and become a champion of change. Together, we can shape a future where AI enriches lives, respects human dignity, and contributes to the greater good of our society.

As you embark on this transformative journey, remember that responsible AI policies are not just a destination; they are an ongoing commitment. Let the knowledge imparted within these pages empower you to navigate the complexities of AI with wisdom, compassion, and an unwavering dedication to ethical practices. Your journey towards responsible AI starts here.

Jefferson Seyanya Seneadza
AI Ethics Advocate and Innovator
Founder, AfTown Music and Aya Tickets

Chapter 1: Introduction to Responsible AI Policies

The objective of this chapter is to introduce the concept of AI, responsible AI and its significance for businesses. We also provide an overview of the content covered in the book.



Getting Started

Artificial Intelligence (AI) has become increasingly prevalent in various aspects of our lives, including business operations, healthcare, and education. As AI continues to advance, it is crucial to establish responsible AI policies to ensure the ethical and beneficial use of these technologies. In this chapter, we will explore the concepts of AI and responsible AI and highlight the importance of AI policies for businesses. By understanding the principles of responsible AI and the need for policies, organizations can navigate the complex ethical and societal considerations associated with AI deployment.

So, What is Artificial Intelligence?

Artificial intelligence (AI) refers to the development of computer systems that can perform tasks that typically require human intelligence. These systems are designed to mimic human cognitive abilities, such as perception, reasoning, learning, and problem-solving. AI has gained significant attention in recent years due to advancements in computing power, data availability, and algorithmic techniques.

Comparing Definitions of AI

Let us examine some definitions of AI.

1. "Artificial Intelligence (AI) is the capability of a machine to imitate intelligent human behavior and perform tasks that would typically require human intelligence, such as visual perception, speech recognition, decision-making, and problem-solving." (Russell & Norvig, 2016, p. 2)

This definition highlights the ability of AI systems to simulate human-like intelligence and perform complex cognitive tasks.

- Reference: Russell, S. J., & Norvig, P. (2016). *Artificial Intelligence: A Modern Approach*. Pearson.

2. "AI is a field of study that focuses on the development of intelligent agents capable of perceiving their environment, reasoning and learning from experiences, and making decisions to achieve specific goals." (Nilsson, 2014, p. 2)

This definition emphasizes the three core components of AI: perception, reasoning, and learning, which enable intelligent agents to interact with their environment and achieve desired outcomes.

- Reference: Nilsson, N. J. (2014). Artificial Intelligence: A New Synthesis. Morgan Kaufmann.
3. "AI refers to the development of computer systems capable of performing tasks that would normally require human intelligence, such as visual perception, natural language understanding, and decision-making." (Goodfellow et al., 2016, p. 1)

This definition focuses on specific AI capabilities, including computer vision, natural language processing, and decision-making, which enable machines to process and understand information like humans.

- Reference: Goodfellow, I., Bengio, Y., & Courville, A. (2016). Deep Learning. MIT Press.

So, Where Can We Find AI?

AI applications can be found in various domains, and here are a few recent examples to illustrate their practical use:

1. **Healthcare:** AI has made significant strides in the healthcare industry, aiding in diagnostics, treatment planning, and personalized medicine. For instance, deep learning algorithms have been developed to analyze medical images (such as X-rays, MRIs, and CT scans) for the detection of diseases like cancer. These algorithms can provide accurate and timely diagnoses, helping doctors make more informed decisions [1].

2. **Autonomous Vehicles:** AI plays a crucial role in the development of self-driving cars. These vehicles use sensors, cameras, and AI algorithms to perceive the environment, make real-time decisions, and navigate safely on the roads. Companies like Tesla, Waymo, and Uber are investing heavily in AI technology to enhance the safety and efficiency of autonomous vehicles [2].
3. **Natural Language Processing (NLP):** NLP is a subfield of AI that focuses on enabling computers to understand and interact with human language. Recent advancements in NLP have led to the development of virtual assistants like Siri, Alexa, and Google Assistant. These intelligent voice-activated systems can perform tasks such as answering questions, setting reminders, and controlling smart home devices [3].
4. **Fraud Detection:** AI algorithms are widely employed in financial institutions to detect fraudulent activities. Machine learning models can analyze large volumes of transactional data in real-time and identify suspicious patterns or anomalies that may indicate fraudulent behavior. These models help prevent financial losses and protect customers from identity theft or unauthorized transactions [4].
5. **Personalized Recommendations:** AI-powered recommendation systems are used by popular online platforms like Netflix, Amazon, and Spotify to provide personalized suggestions to users. These systems analyze user preferences, behavior, and historical data to generate recommendations tailored to individual tastes and preferences. This improves user experience and enhances customer engagement [5].

These examples demonstrate the diverse applications of AI in various industries. As technology continues to advance, AI is expected to have an even more significant impact on our daily lives, revolutionizing sectors like education, agriculture, manufacturing, and more.

References:

1. Esteva, A., Kuprel, B., Novoa, R. A., Ko, J., Swetter, S. M., Blau, H. M., & Thrun, S. (2017). Dermatologist-level classification of skin cancer with deep neural networks. *Nature*, 542(7639), 115-118.
2. Waymo. (n.d.). How Waymo works. Retrieved from <https://waymo.com/faq/>
3. Sutskever, I., Vinyals, O., & Le, Q. V. (2014). Sequence to sequence learning with neural networks. *Advances in neural information processing systems*, 27.
4. Dal Pozzolo, A., Caelen, O., Le Borgne, Y. A., Waterschoot, S., & Bontempi, G. (2014). Learned lessons in credit card fraud detection from a practitioner perspective. *Expert systems with applications*, 47(10), 4915-4928.
5. Ricci, F., Rokach, L., Shapira, B. (2011). *Introduction to Recommender Systems Handbook*. In: Ricci, F., Rokach, L., Shapira, B., Kantor, P. (eds) *Recommender Systems Handbook*. Springer, Boston, MA. https://doi.org/10.1007/978-0-387-85820-3_1

How AI is Positively Impacting Africa

AI is positively impacting Africa in several ways:

1. **Agriculture:** AI-based solutions like the smartphone app developed by Agrix Tech in Cameroon help farmers diagnose plant diseases and suggest treatments, leading to improved crop yields and reduced losses. Similar applications, such as Hello Tractor in Mozambique, use AI to predict crop yields and optimize farming practices.

2. **Transportation:** Startups like Swivl in Egypt are utilizing AI to coordinate private bus fleets, enhancing transportation efficiency and providing commuters with alternative options in areas with overwhelmed public transit networks.
3. **Banking and Finance:** AI is being leveraged by financial services in Africa, such as M-Shwari in Kenya, to automate loan application reviews and offer financial services to customers in remote areas without physical bank branches.
4. **Economic Growth:** The adoption of AI and related technologies is estimated to contribute over \$15 trillion to the global gross domestic product by 2030, potentially driving economic growth and creating job opportunities in Africa.
 - Reference: Moyo, M-J. (March, 2021). The very real benefits of AI in Africa African Business, Retrieved <https://african.business/2021/03/energy-resources/the-very-real-benefits-of-ai-in-africa>
5. **Improved Healthcare:** AI is being utilized in various healthcare applications across different countries in Africa. In Kenya, it aids health worker-patient interactions to detect blinding eye disorders, leading to early diagnosis and treatment. In Egypt, AI supports automated decision-making systems for healthcare, enhancing medical support and efficiency. South Africa benefits from AI in drug prescription and human resource planning, ensuring accurate medication and effective allocation of healthcare personnel.
6. **Disease Diagnosis:** Machine learning (ML) models, a branch of AI, are deployed in Nigeria to aid in the diagnosis of birth asphyxia and identify fake drugs. ML is also used in Zambia for the diagnosis of diabetic retinopathy, enabling early

detection and prevention of blindness. In Tanzania, ML is employed to diagnose pulmonary tuberculosis, improving the efficiency and accuracy of detection.

7. **Climate and Energy:** Morocco has leveraged ML and deep learning models, such as convolutional neural networks (CNNs), for various applications. In the context of climate, AI assists in monitoring and analyzing climate patterns and impacts, aiding in climate change mitigation and adaptation efforts. Additionally, ML models are used to classify breast cancer cases from histopathology samples, contributing to early detection and treatment.
8. **Language and Communication:** The use of AI-powered voice recognition technology can greatly benefit individuals who speak native languages in Africa. This technology enables people to interact with computers and receive important information in their own language. For instance, an illiterate farmer in Rwanda can communicate with a computer in Kinyarwanda, her native tongue, to access valuable advice on improving farming methods. With approximately 2,000 native languages spoken in Africa, developing voice interaction models in these languages has the potential to reach a large number of people. In Rwanda, a local startup called Digital Umuganda is actively collecting voice language data specifically in Kinyarwanda. This data is openly accessible on the Mozilla Common Voice Platform and can be utilized to create AI-based voice interaction models specifically tailored to the Kinyarwanda language. For instance, Digital Umuganda is currently working on a text-to-speech model that can read out government publications and announcements to individuals who are visually impaired or unable to read (SMARTAfrica, 2021).

- Reference: Ade-Ibijola, A., Okonkwo, C. (2023). Artificial Intelligence in Africa: Emerging Challenges. In: Eke, D.O., Wakunuma, K., Akintoye, S. (eds) Responsible AI in Africa. Social and Cultural Studies of Robots and AI. Palgrave Macmillan, Cham. https://doi.org/10.1007/978-3-031-08215-3_5
- Reference: SmartAfrica Blueprint (2021). Artificial Intelligence For Africa, SmartAfrica. Retrieved https://smart.africa/board/login/uploads/70029-eng_ai-for-africa-blueprint.pdf

Overall, AI's positive impact in Africa spans healthcare, disease diagnosis, climate monitoring, and energy applications. By leveraging AI technologies, African countries are improving healthcare access, enhancing disease diagnosis, addressing climate challenges, and advancing various sectors for the benefit of their communities.



Broad Categories of AI

AI is evolving, and new forms of it are developed each year. However, AI can be broadly categorized into the following types:

1. **Narrow AI (Weak AI):** Narrow AI refers to AI systems that are designed to perform specific tasks or solve specific problems within a limited domain. These systems excel at specialized tasks but lack general intelligence. Examples of narrow AI include voice assistants like Siri and Alexa, recommendation systems, and image recognition algorithms.
2. **General AI (Strong AI):** General AI refers to AI systems that possess human-level intelligence and can understand, learn, and apply knowledge across different domains. General AI aims to replicate human cognitive abilities and exhibit flexible problem-solving skills. Achieving true general AI remains an ongoing challenge in the field.
3. **Machine Learning (ML):** Machine learning is a subset of AI that focuses on enabling systems to learn from data and improve their performance without explicit programming. ML algorithms can analyze patterns, make predictions, and adapt their behavior based on experience. Examples of ML techniques include supervised learning, unsupervised learning, and reinforcement learning.
4. **Deep Learning:** Deep learning is a subfield of machine learning that utilizes artificial neural networks with multiple layers to model and process complex patterns and data representations. Deep learning has achieved significant breakthroughs in areas such as image recognition, natural language processing, and speech recognition.
5. **Reinforcement Learning:** Reinforcement learning involves training an AI agent to make decisions and take actions in an environment to maximize rewards. The agent learns

through trial and error, receiving feedback in the form of rewards or penalties for its actions. Reinforcement learning has been successfully applied to game playing, robotics, and autonomous vehicle control.

6. **Natural Language Processing (NLP):** NLP involves the interaction between computers and human language. It enables machines to understand, interpret, and generate human language in a meaningful way. NLP techniques are used in various applications, such as machine translation, sentiment analysis, and chatbots.
7. **Computer Vision:** Computer vision focuses on enabling machines to understand and interpret visual information from images or videos. It involves tasks such as object recognition, image classification, and image segmentation. Computer vision finds applications in autonomous vehicles, surveillance systems, and medical imaging.

References:

1. Bringsjord, S. & Naveen S. G.,(2022). "Artificial Intelligence", The Stanford Encyclopedia of Philosophy (Fall 2022 Edition), Edward N. Zalta & Uri Nodelman (eds.), Retrieved: <https://plato.stanford.edu/archives/fall2022/entries/artificial-intelligence/>.
2. Goodfellow, I., Bengio, Y., & Courville, A. (2016). Deep Learning. MIT Press.
3. Hastie, T., Tibshirani, R., Friedman, J. H., & Friedman, J. H. (2009). The elements of statistical learning: data mining, inference, and prediction (Vol. 2, pp. 1-758). New York: springer.
4. Jurafsky, D., & Martin, J. H. (2019). Speech and Language Processing (3rd ed.). Pearson.
5. Nilsson, N. J. (2014). Artificial Intelligence: A New Synthesis. Morgan Kaufmann.
6. Russell, S. J., & Norvig, P. (2016). Artificial Intelligence: A Modern Approach. Pearson.

Notable Emerging Forms of AI

Indeed, the field of AI is rapidly evolving, and new applications are emerging continuously. The examples provided earlier represent a snapshot of recent advancements in AI, but it is important to note that the development and trends in AI are constantly expanding and evolving. The dynamic nature of the field ensures that new applications and breakthroughs will continue to shape the landscape of AI in the future.

Generative AI: Generative AI refers to AI systems that can generate new and original content, such as images, music, or text. These systems use techniques like generative adversarial networks (GANs) or variational autoencoders (VAEs) to learn patterns from existing data and create new instances that resemble the training data. Generative AI has applications in areas such as content creation, design, and entertainment.

Explainable AI (XAI): Explainable AI focuses on developing AI systems that can provide transparent and understandable explanations for their decisions and actions. XAI aims to address the "black box" nature of some AI models and provide insights into how AI algorithms arrive at their results. This field is important for building trust, accountability, and ethical decision-making in AI applications, especially in critical domains like healthcare and finance.

Edge AI: Edge AI involves deploying AI algorithms and models directly on edge devices, such as smartphones, IoT devices, or edge servers, instead of relying on cloud-based processing. Edge AI enables real-time and offline AI inference on the device itself, reducing latency, improving privacy and security, and enabling AI applications in resource-constrained environments. Edge AI finds

applications in areas like autonomous vehicles, smart homes, and industrial IoT.

Federated Learning: Federated learning is an approach where multiple edge devices collaboratively train a shared AI model without sharing their raw data. The training process takes place locally on the devices, and only model updates are exchanged with a central server. Federated learning preserves data privacy and security while enabling the benefits of collective intelligence. It is particularly useful in scenarios where data is distributed across multiple devices, such as healthcare, finance, and smart cities.

Swarm Intelligence: Swarm intelligence draws inspiration from the collective behavior of social insect colonies, such as ants or bees, to design AI algorithms and systems. These algorithms simulate the decentralized and self-organized nature of swarm behavior to solve complex problems, optimize resource allocation, and perform tasks collaboratively. Swarm intelligence has applications in areas like optimization, robotics, and traffic management.

Quantum AI: Quantum AI explores the intersection of AI and quantum computing. Quantum computers leverage quantum phenomena to perform computations that can potentially solve certain problems much faster than classical computers. Quantum AI aims to harness the power of quantum computing to enhance AI algorithms and enable new capabilities in areas like optimization, machine learning, and cryptography.

These emerging forms of AI are actively researched and developed, holding significant promise for advancing the capabilities and applications of AI in various domains.

References:

1. Biamonte, J., et al. (2017). Quantum Machine Learning. *Nature*, 549(7671), 195-202.
2. Bonabeau, E., et al. (1999). Swarm Intelligence: A Whole New Way to Think About Business. *Harvard Business Review*, 77(5), 106-114.
3. Castrounis, A. (2019). AI for people and business: A framework for better human experiences and business success. O'Reilly Media.
4. Foster, D. (2022). Generative deep learning. " O'Reilly Media, Inc."
5. Samek, W., Montavon, G., Vedaldi, A., Hansen, L. K., & Müller, K. R. (Eds.). (2019). *Explainable AI: interpreting, explaining and visualizing deep learning* (Vol. 11700). Springer Nature.
6. Shi, W., & Dustdar, S. (2016). The promise of edge computing. *Computer*, 49(5), 78-81.
7. Tang, J., Duan, H., & Lao, S. (2023). Swarm intelligence algorithms for multiple unmanned aerial vehicles collaboration: A comprehensive review. *Artificial Intelligence Review*, 56(5), 4295-4327.

So What is Responsible AI?

Responsible AI refers to the ethical and accountable development, deployment, and use of AI technologies. It encompasses principles and practices that prioritize transparency, fairness, accountability, and human well-being. Responsible AI recognizes the potential risks and impacts of AI on individuals, society, and the environment and seeks to mitigate these risks while maximizing the benefits (OECD, 2019).

Responsible AI involves considering the broader societal implications of AI, such as privacy, bias, job displacement, and the potential for unintended consequences. It emphasizes the need for transparency in AI decision-making processes, fairness in algorithmic outcomes, and mechanisms for accountability and redress. Responsible AI also takes into account the ethical dimensions of AI, including considerations of privacy, autonomy, and human dignity (Floridi et al., 2018).

Importance of AI Policies for Businesses

In an era where AI technologies are increasingly integrated into business operations, having well-defined AI policies is paramount. These policies provide a framework that guides the organization's approach to responsible AI and ensures alignment with ethical and legal standards. There are several key reasons why AI policies are crucial for businesses:

a. Ethical Considerations: AI can raise ethical dilemmas, such as privacy infringement, bias amplification, and autonomous decision-making. AI policies enable organizations to establish ethical guidelines and ensure that AI technologies are developed and used in a manner that respects individuals' rights, fairness, and societal well-being. Ethical guidelines can help organizations identify and address potential biases in AI systems, promote diversity and inclusion, and protect user privacy (Jobin et al., 2019).

b. Legal Compliance: AI technologies are subject to various legal and regulatory requirements, including data protection, intellectual property, and anti-discrimination laws. AI policies help organizations navigate these complex legal landscapes, ensuring compliance and mitigating legal risks. For example, the European Union's General Data Protection Regulation (GDPR) requires organizations to ensure transparency and accountability in automated decision-making processes, further underscoring the need for robust AI policies (Regulation (EU) 2016/679).

c. Risk Management: AI deployment involves inherent risks, such as data breaches, algorithmic biases, and unintended consequences. AI policies facilitate risk assessment and management strategies, enabling organizations to identify, evaluate, and mitigate potential risks associated with AI technologies. Organizations can establish guidelines for data

privacy, security, and model validation to mitigate the risks associated with AI deployment (Mittelstadt et al., 2016).

d. Stakeholder Trust: Responsible AI policies demonstrate an organization's commitment to ethical practices, transparency, and accountability. By implementing and communicating clear AI policies, businesses can build trust with customers, employees, investors, and other stakeholders, enhancing their reputation and long-term sustainability. Trust is particularly crucial for AI adoption, as public skepticism and concerns about AI ethics can hinder its widespread acceptance (Lukyanenko et al., 2022).

e. Innovation and Competitive Advantage: Well-crafted AI policies foster an environment that encourages responsible innovation. By ensuring that AI technologies align with societal values, organizations can differentiate themselves in the market and gain a competitive advantage. Responsible AI policies also foster creativity, as ethical considerations are integrated into the innovation process. For instance, organizations that prioritize fairness and transparency in their AI systems can gain a competitive edge by avoiding controversies related to biased decision-making (Jobin et al., 2019).

Potential Risks of AI in Africa

There are potential risks associated with AI in Africa, some of which are:

Job Displacement: The automation capabilities of AI could lead to job losses in various sectors, affecting the livelihoods of individuals employed in industries like manufacturing, customer service, and agriculture. This risk is particularly significant in countries with a high dependency on labor-intensive industries.

Data Inequality: AI relies on large amounts of data for training and development. Smaller companies or countries with limited access to data may face challenges in competing with larger corporations that have extensive data resources. This could exacerbate existing inequalities and create a divide between AI haves and have-nots.

Social Implications: Misuse of AI can potentially invade privacy, sow mistrust, or suppress dissent, leading to societal challenges. There is a need for robust legislation, ethical guidelines, and industry standards to mitigate these risks and ensure that AI is developed and deployed responsibly.

To address these risks and harness the potential of AI, it is essential for countries in Africa to take proactive measures such as opening access to big data, establishing interoperability standards, and providing financial support to technology startups. These actions can help Africa leverage AI for economic development while managing the associated challenges.

- Reference: Ade-Ibijola, A., Okonkwo, C. (2023). Artificial Intelligence in Africa: Emerging Challenges. In: Eke, D.O., Wakunuma, K., Akintoye, S. (eds) Responsible AI in Africa. Social and Cultural Studies of Robots and AI. Palgrave Macmillan, Cham. https://doi.org/10.1007/978-3-031-08215-3_5

Misconceptions About AI

There are various misconceptions and exaggerated narratives surrounding AI. It is important to have a clear understanding of what AI is and what it can and cannot do.

AI is not equivalent to human intelligence: AI, particularly machine learning, focuses on specific tasks and does not possess the same multifaceted intelligence as humans. Human intelligence includes analytical, creative, practical, and contextual abilities that AI systems cannot replicate.

AI is not artificial: AI is not a magical solution that exists in isolation. It requires the use of natural resources and the work of many people throughout its lifecycle, from hardware production to data labeling.

AI is not just about algorithms: While AI relies on algorithms, AI itself is not solely defined by algorithms. Algorithms are like recipes, and the behavior and outcomes of AI systems depend on various factors, including input data, training methods, and choices made by developers.

AI is embedded in social, political, and economic contexts: AI is deeply influenced by and embedded within the social, political, cultural, and economic realities of those who build, use, and control it. It is not an objective, neutral, or universal computational technique.

Responsible AI is crucial: The choices made in developing and deploying AI systems are significant. It is important to prioritize values such as fairness, privacy, transparency, and ethical considerations in AI development to ensure responsible and beneficial outcomes.

- Eke, D.O., Wakunuma, K., Akintoye, S. (2023). Introducing Responsible AI in Africa. In: Eke, D.O., Wakunuma, K., Akintoye, S. (eds) Responsible AI in Africa. Social and Cultural Studies of Robots and AI. Palgrave Macmillan, Cham. https://doi.org/10.1007/978-3-031-08215-3_1

In summary, understanding the true nature of AI, recognizing its limitations, considering its societal implications, and promoting responsible AI practices are essential for effective AI governance and harnessing its potential benefits while mitigating risks.

Practice Question 1

How can responsible AI policies help businesses address the ethical considerations associated with AI deployment? Provide specific examples. Discuss.

Practice Question 2

What are the key differences between narrow AI and general AI? How might the development and deployment of general AI impact various industries and society as a whole?



Synopsis of Chapters

Chapter 1: Introduction to Responsible AI Policies

In this chapter, we introduced the concept of responsible AI and its significance for businesses. We provide an overview of the content covered in the book.

Chapter 2: Understanding the Ethical Implications of AI

We delve into the ethical considerations associated with AI technologies, including potential risks and biases. The chapter emphasizes the need for responsible AI policies to address these concerns.

Chapter 3: Key Principles for Responsible AI Policies

We outline the fundamental principles that should guide the development of responsible AI policies, including transparency, fairness, privacy, and accountability.

Chapter 4: Legal and Regulatory Landscape for AI

This chapter provides an overview of the relevant legal and regulatory frameworks surrounding AI, including that of the United Nations Educational, Scientific and Cultural Organization (UNESCO) and the Organisation for Economic Co-operation and Development (OECD). We discuss the impact of data protection regulations and highlight key legal considerations for businesses.

Chapter 5: Steps to Develop Effective AI Policies

Here, we present a step-by-step guide to developing effective AI policies. We cover aspects such as risk assessment, stakeholder engagement, drafting, implementation, and continuous monitoring.

Chapter 6: Best Practices for Implementing Responsible AI Policies

We explore best practices for organizations to implement responsible AI policies, including establishing guidelines, ethical review processes, employee training, and collaboration with external experts.

Chapter 7: Case Studies: Successful Implementation of Responsible AI Policies

Through real-world case studies, we examine organizations that have successfully implemented responsible AI policies. We analyze the impacts of these policies and extract valuable lessons.

Chapter 8: Overcoming Challenges in AI Policy Implementation

This chapter addresses common challenges encountered during the implementation of responsible AI policies and provides strategies to overcome them. We explore technical, cultural, and organizational hurdles.

Chapter 9: The Future of Responsible AI Policies

We discuss emerging trends and advancements in AI policy frameworks, anticipated changes in legal and regulatory landscapes, and ethical considerations in emerging technologies. One of the emerging considerations discussed is AI addiction, its effects and measures to address it. In addition, empowering women in AI is also discussed.

Chapter 10: Conclusion

In the final chapter, we recap the key concepts discussed throughout the book and emphasize the importance of developing responsible AI policies. We encourage readers to take action and prioritize responsible AI within their organizations.

Chapter Summary

The introduction of responsible AI policies is critical for businesses to navigate the complex landscape of AI ethics and governance. By defining and implementing these policies, organizations can ensure the ethical and accountable use of AI technologies, address potential risks, and build trust with stakeholders.

Responsible AI policies not only align organizations with ethical standards but also provide a solid foundation for harnessing the full potential of AI in a manner that benefits both the organization and society as a whole.

References:

1. Floridi, L., Cowls, J., Beltrametti, M., Chatila, R., Chazerand, P., Dignum, V., ... & Luetge, C. (2018). AI4People—An ethical framework for a good AI society: Opportunities, risks, principles, and recommendations. *Minds and Machines*, 28(4), 689-707.
2. Jobin, A., Ienca, M., & Vayena, E. (2019). The global landscape of AI ethics guidelines. *Nature Machine Intelligence*, 1(9), 389-399.
3. Mittelstadt, B. D., Allo, P., Taddeo, M., Wachter, S., & Floridi, L. (2016). The ethics of algorithms: Mapping the debate. *Big Data & Society*, 6(2), 1-21
4. OECD. (2019). Artificial Intelligence. <https://www.oecd.org/digital/artificial-intelligence/>
5. Regulation (EU) 2016/679 of the European Parliament and of the Council of 27 April 2016 on the protection of natural persons with regard to the processing of personal data and on the free movement of such data, and repealing Directive 95/46/EC (General Data Protection Regulation). *Official Journal of the European Union*, L119, 1-88. <https://eur-lex.europa.eu/eli/reg/2016/679/oj>
6. Lukyanenko, R., Maass, W. & Storey, V.C. (2022). Trust in artificial intelligence: From a Foundational Trust Framework to emerging research opportunities. *Electron Markets* 32, 1993–2020. <https://doi.org/10.1007/s12525-022-00605-4>.



Chapter 2: Understanding the Ethical Implications of AI

In this chapter, we delve into the ethical considerations surrounding the development and deployment of artificial intelligence (AI). As AI technologies continue to advance and permeate various aspects of society, it becomes crucial to examine the potential risks and biases associated with AI.

We explore the challenges to AI adoption, ethical implications of AI and emphasize the need for responsible AI policies to mitigate these concerns. By understanding these ethical implications, businesses can develop AI policies that align with ethical principles, promote fairness, and ensure the responsible use of AI technologies.



Emerging Challenges to AI Adoption in Africa

AI adoption in Africa faces several challenges that hinder its widespread use and implementation. These challenges include:

Skills Acquisition: One of the primary challenges to AI adoption in Africa is the acquisition of relevant skills. Developing, implementing, and effectively utilizing AI applications require a workforce equipped with both theoretical and practical skills. However, there is a scarcity of AI-ready workers in developing markets like Africa, creating a demand-supply imbalance. Technical skills, particularly programming skills, are crucial in the era of the Fourth Industrial Revolution (4IR) and are essential for successful AI adoption. It is imperative to invest in educational programs and curriculum enhancements to incorporate AI skills from the secondary level, enabling Africans to acquire the necessary expertise.

Uncertainty: The uncertainty surrounding the benefits and implications of AI technology poses a significant challenge to its adoption in Africa. While AI offers numerous advantages, such as instant response, time-saving, and medical advances, some benefits, such as automation of processes and enhanced learning, may not be well-understood by users in Africa. Additionally, concerns about AI disrupting traditional ways of working and the fear of the unknown hinder widespread acceptance. Building awareness and fostering a better understanding of AI's potential benefits, along with addressing concerns through open discussions, can help overcome this challenge.

Lack of Structured Data Ecosystem: AI initiatives heavily rely on high-quality and relevant data. However, Africa faces data shortages and a lack of a structured data ecosystem. Insufficient data reflects demographic variables and leads to inadequate AI

performance. Moreover, the scarcity of data in Africa may result in the adoption of machine learning algorithms built on biased or non-representative datasets. To overcome this challenge, there is a need to develop a deeper, larger, and more accessible pool of data that reflects the African population's diversity and experiences. Efforts should be made to collect comprehensive data and ensure its quality for training AI systems.

Lack of Relevant Government Policies: The absence of comprehensive and relevant government policies specifically addressing AI adoption is another obstacle in Africa. While some African countries have recognized the potential of AI and developed national AI strategies, data protection laws, and regulations, most of these initiatives are still in their early stages. Establishing well-structured AI adoption and implementation policies and frameworks at both national and continental levels is crucial to promote AI's responsible deployment and mitigate potential societal impacts. African governments and the African Union should prioritize the design and implementation of such policies to foster AI adoption and address ethical considerations.

Ethics: Ethical implications associated with AI adoption pose significant challenges in Africa. As AI technology develops, it raises ethical concerns related to accountability, data bias, transparency, and socio-economic risks. African cultures and societal norms play a crucial role in promoting ethical practices and building confidence in the development and applications of technologies. Open discussions and engagement with stakeholders are essential to address ethical challenges and ensure that AI technology aligns with African values and societal expectations.

User Attitudes: The attitudes of users towards AI adoption significantly impact its acceptance in Africa. Cultural and social influences often make Africans skeptical about adopting and using new technologies. Positive perceptions of AI innovations accelerate their adoption, while negative attitudes hinder progress. Therefore, it is crucial to shape stakeholders' attitudes through educational campaigns, awareness programs, and targeted initiatives. Higher education institutions should play a vital role in molding positive attitudes towards AI by integrating AI technology into their curriculum and showcasing its potential benefits.

Insufficient Infrastructure and Network Connectivity: Inadequate infrastructure and limited access to affordable network connectivity pose significant challenges to AI adoption in Africa. Remote and underserved areas face infrastructure gaps and poor connectivity, hindering the deployment and utilization of AI technologies. Bridging the digital divide and improving infrastructure, including internet access and network connectivity, are critical steps towards fostering AI adoption in Africa. Public-private partnerships, investment in digital infrastructure, and innovative solutions can help overcome this challenge.

- Reference: Ade-Ibijola, A., Okonkwo, C. (2023). Artificial Intelligence in Africa: Emerging Challenges. In: Eke, D.O., Wakunuma, K., Akintoye, S. (eds) Responsible AI in Africa. Social and Cultural Studies of Robots and AI. Palgrave Macmillan, Cham. https://doi.org/10.1007/978-3-031-08215-3_5

Addressing these challenges requires collaborative efforts from governments, educational institutions, the private sector, and international organizations. By investing in AI education, developing comprehensive policies, promoting data availability and quality, and ensuring ethical AI practices, Africa can overcome these obstacles and harness the transformative potential of AI for sustainable development and socio-economic growth.

Ethical Concerns in AI Development and Deployment

AI development and deployment raise a range of ethical considerations. One key concern is the potential impact of AI systems on human autonomy and decision-making. AI algorithms can influence or even replace human decision-making processes, leading to questions of accountability and responsibility. For example, in autonomous vehicles, AI algorithms make split-second decisions that can have ethical consequences, such as prioritizing the safety of the occupants versus pedestrians. Determining the ethical framework within which AI algorithms should operate becomes crucial (Rhim et al., 2021).

Additionally, AI systems are trained using vast amounts of data, which can introduce biases. Biased data can perpetuate societal inequalities and discrimination when AI algorithms make decisions based on historical data that reflects existing biases. For instance, biased algorithms in recruitment processes can result in discriminatory hiring practices. Recognizing and addressing these biases is essential to ensure fairness and non-discrimination in AI applications (O'Neil, 2016).

Case Study 1: Digital IDs in South Africa

In South Africa, there was a problematic instance of implementing an AI-based digital ID system for granting access to social benefits. Approximately 18 million individuals in the country rely on social grants for essential social security. In 2012, the South African Social Security Agency (SASSA) entered into a contract with Cash Paymaster Services (CPS) to distribute these grants through a digital ID system that later incorporated advanced AI analytics. CPS's parent company, Net1, had access to the data of all 18 million beneficiaries, which they used to target and exploit vulnerable individuals with financial offers. Net1, due to its

association with CPS, deducted loan repayments directly from the beneficiaries' grant payments, leaving them with minimal or no payment each month. This unethical practice came to light during a series of court cases, exposing the inappropriate sharing of personal data of the most vulnerable individuals in South African communities and highlighting the lack of awareness regarding digital and information rights.

- Reference: Adams, R. (2022, December 4). AI in Africa: Key Concerns and Policy Considerations for the Future of the Continent. Policy Brief No. 8. Berlin: APRI. <https://afripoli.org/ai-in-africa-key-concerns-and-policy-considerations-for-the-future-of-the-continent>

Potential Risks and Biases Associated with AI Technologies:

AI technologies come with inherent risks that can have significant societal implications. A few of these risks are as follows:

Algorithmic Bias: Another risk is the unintended consequences of AI algorithms. In complex environments, AI algorithms may make decisions that have unforeseen negative impacts. For instance, algorithmic trading systems can contribute to market instability or create cascading effects during financial crises (Burrell, 2016). AI algorithms used in healthcare settings, such as diagnosis or treatment recommendation systems, can be subject to bias. If the training data used to develop these algorithms is not diverse and representative, they may perform differently across different demographics. This can lead to disparities in healthcare outcomes, with certain groups receiving inadequate or inaccurate care.

Privacy Concerns: AI technologies often rely on collecting and analyzing large amounts of personal data. This raises concerns about privacy infringement, as individuals' sensitive information may be used without their knowledge or consent. For example,

facial recognition systems deployed in public spaces can lead to the mass surveillance of individuals and the erosion of privacy rights.

Unemployment and Job Displacement: AI technologies have the potential to automate various tasks and job roles. While this can increase efficiency and productivity, it also raises concerns about job displacement and unemployment. Certain industries and occupations may be particularly vulnerable to AI-driven automation, potentially leading to economic inequality and social unrest.

Case Study 2: Precarious and Insecure Labor through Click Work

In today's global AI economy, a new kind of precarious and insecure labor is demanded, and once again, it tends to be extracted from impoverished populations and communities. This form of labor, known as micro digital labor or click work, has been extensively discussed in academic studies and commentary on platforms like Amazon Mechanical Turk, which crowdsources online tasks. It involves labeling vast amounts of data and only requires workers to have access to a computer. Typically, laborers have to bid for such work and receive meager payments per unit of work. They often encounter emotionally distressing content, such as labeling violent or disturbing images and videos.

A recent investigation into digital labor in the Global South exposed how Big Tech and other platforms exploit refugee camps as a new source of cheap digital labor. For example, in Dadaab, one of the world's largest refugee camps located near Kenya's eastern border, providing shelter to a quarter of a million refugees from across Africa, tents equipped with hundreds of computers and yards of wires have been set up to facilitate click work for camp

residents. As highlighted by researcher, Phil Jones, a day's work might involve tasks like labeling videos, transcribing audio, or training algorithms to identify various photos of cats. These activities contribute to the improved efficiency of AI technologies but subject already vulnerable individuals to meaningless and distressing work without fair labor rights or protections.

- Reference: Adams, R. (2022, December 4). AI in Africa: Key Concerns and Policy Considerations for the Future of the Continent. Policy Brief No. 8. Berlin: APRI. <https://afripoli.org/ai-in-africa-key-concerns-and-policy-considerations-for-the-future-of-the-continent>
- Reference: Jones, P. (2021, September 21). Refugees help power machine learning advances at Microsoft, Facebook, and Amazon. *Rest of World*. <https://restofworld.org/2021/refugees-machine-learning-big-tech/>

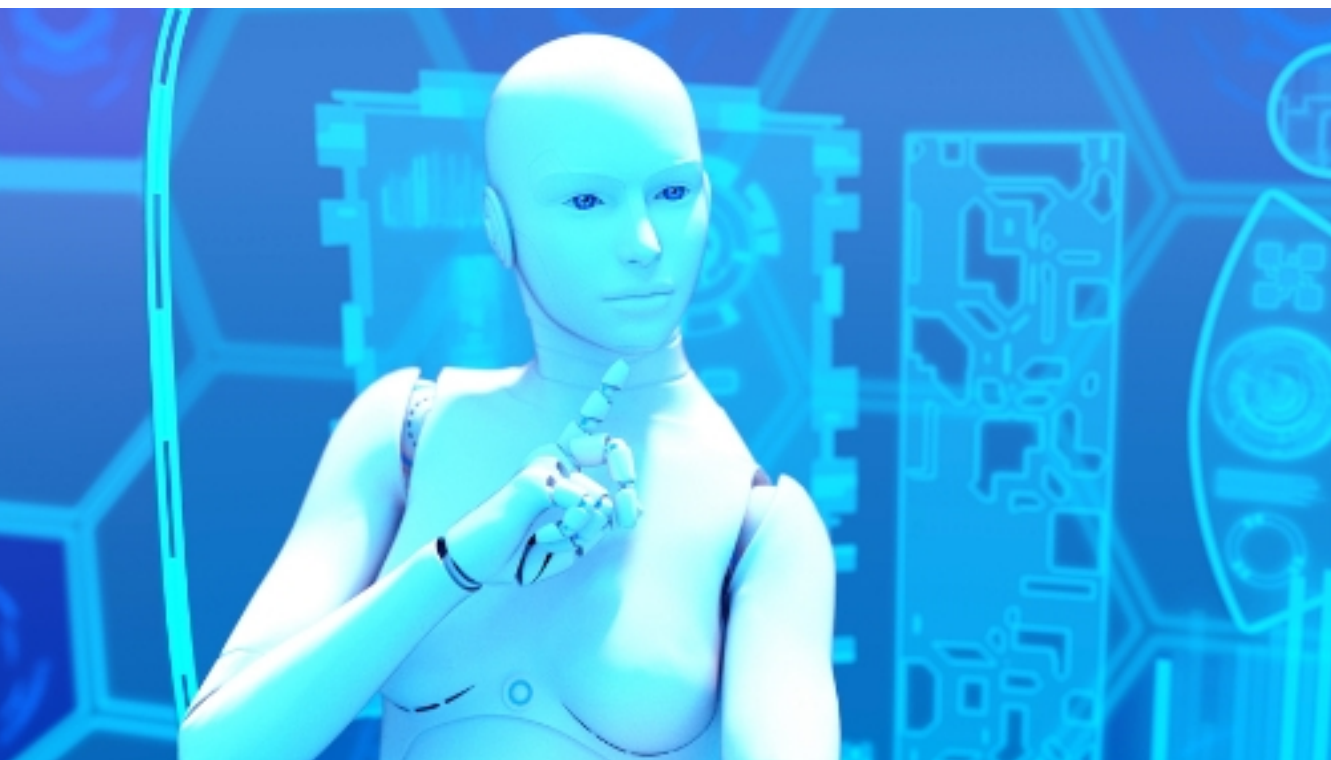
Autonomous Weapons: The development and deployment of autonomous weapons systems raise ethical concerns. These AI-powered weapons can make decisions about targets and the use of force without human intervention. The risks include accidental harm, escalation of conflicts, or misuse by malicious actors.

Deep Reinforcement Learning Risks: Deep reinforcement learning, a technique used to train AI agents through trial and error, can have unintended consequences. If not properly guided or supervised, these agents may learn harmful or undesirable behaviors. For instance, an AI agent trained to maximize a reward in a game environment may find loopholes or exploit unintended vulnerabilities.

Lack of Transparency and Explainability: Many AI models and algorithms operate as black boxes, meaning their decision-making processes are not easily understandable or explainable. This lack of transparency can hinder accountability and raise concerns about bias, discrimination, or unfair decision-making.

Social Manipulation and Propaganda: AI technologies can be used to manipulate public opinion and spread propaganda at an unprecedented scale. Automated social media bots, for example, can amplify certain narratives, spread misinformation, or engage in coordinated campaigns to influence public discourse and elections. One such risk is the potential for AI systems to be used for malicious purposes. For example, AI-powered deepfake technology can be employed to create convincing fake videos or audio recordings, leading to misinformation or even the manipulation of public opinion. AI algorithms can also exacerbate existing biases and inequalities in society. If not carefully designed and monitored, AI systems can reinforce discriminatory practices, such as racial or gender bias in hiring, lending, or criminal justice systems. Addressing these biases is crucial for ensuring fairness and equal opportunities (Whittaker, et al., 2018).

Addressing these risks and biases requires ongoing research, robust ethical frameworks, regulations, and accountability mechanisms to ensure the responsible development and deployment of AI technologies.



The Need for Responsible AI Policies

Given the ethical considerations and potential risks associated with AI technologies, it is imperative for businesses to establish responsible AI policies. Responsible AI policies provide a framework for addressing these ethical concerns and mitigating the risks associated with AI.

Responsible AI policies can include guidelines for developing and deploying AI systems that prioritize fairness, transparency, and accountability. For example, policies can require algorithmic transparency, ensuring that AI systems provide explanations for their decisions and are open to scrutiny. This promotes transparency and helps detect and rectify any biases or unfair practices (Mittelstadt et al., 2016).

Furthermore, responsible AI policies can encourage the use of diverse and representative data during the training of AI algorithms. By incorporating a wide range of perspectives and avoiding biased data, businesses can reduce the potential for AI systems to perpetuate discrimination and inequalities (Buolamwini & Gebru, 2018).

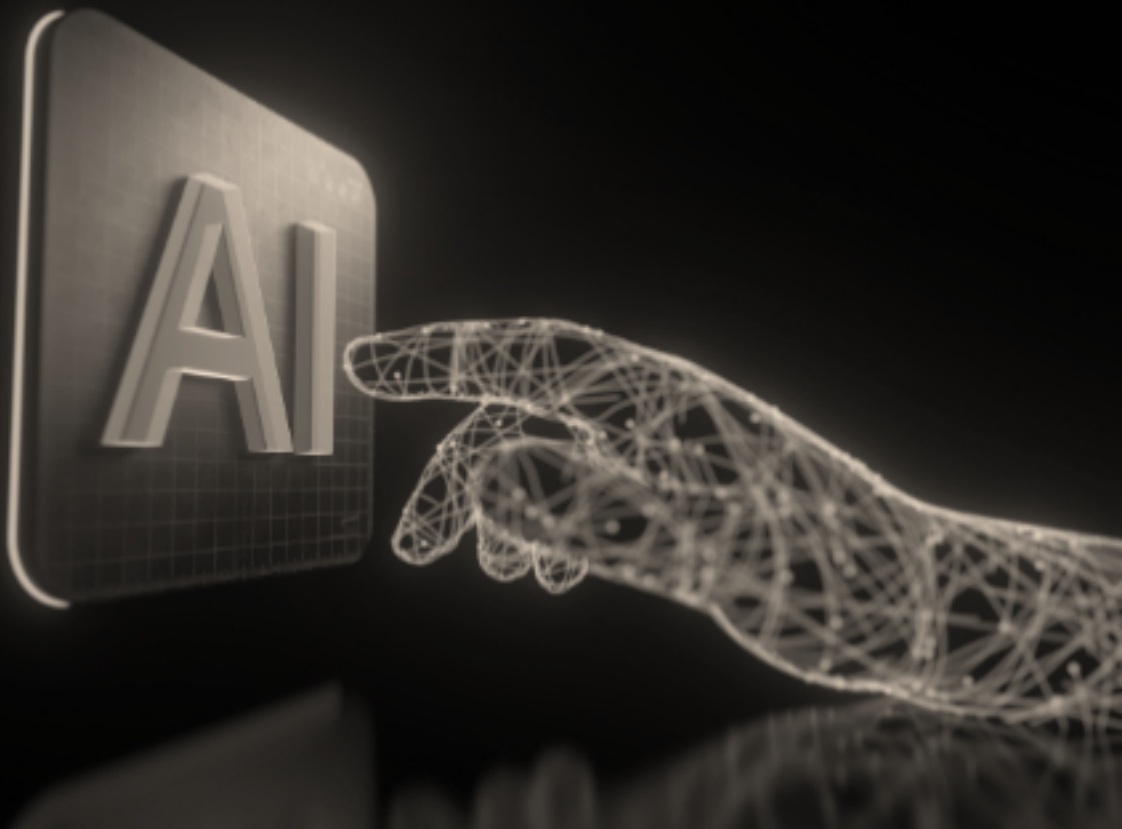
Implementing responsible AI policies also requires ongoing monitoring and assessment. Regular audits of AI systems can identify any emerging ethical concerns or biases and prompt necessary adjustments or corrective actions. By continuously evaluating and improving AI systems, businesses can ensure the responsible use of AI technologies (European Commission, 2019).

Practice Question 3

How can algorithmic bias in AI systems be mitigated to ensure fair and equitable outcomes, particularly in sectors like healthcare and criminal justice? What measures should be implemented to address biases in training data and algorithm design?

Practice Question 4

In light of the potential job displacement caused by AI automation, what strategies can be employed to ensure a smooth transition for workers and mitigate the negative socio-economic impacts? How can governments, businesses, and educational institutions collaborate to reskill and upskill the workforce for the AI-driven future?



Chapter Summary

Understanding the ethical implications of AI is crucial for businesses aiming to develop responsible AI policies. By considering the potential risks and biases associated with AI technologies, businesses can proactively address ethical concerns and promote the responsible use of AI. Responsible AI policies that prioritize fairness, transparency, and accountability can mitigate the potential negative impacts of AI systems and foster trust among stakeholders.

In the next chapter, we will explore the key principles that underpin the development of responsible AI policies and guide businesses in navigating the ethical landscape of AI.

References:

1. Burrell, J. (2016). How the machine 'thinks': Understanding opacity in machine learning algorithms. *Big Data & Society*, 3(1), 2053951715622512.
2. Buolamwini, J., & Gebru, T. (2018). Gender shades: Intersectional accuracy disparities in commercial gender classification. *Proceedings of the 1st Conference on Fairness, Accountability and Transparency*, 77-91.
3. European Commission. (2019). *Ethics Guidelines for Trustworthy AI*. https://ec.europa.eu/newsroom/dae/document.cfm?doc_id=60419
4. Mittelstadt, B. D., Allo, P., Taddeo, M., Wachter, S., & Floridi, L. (2016). The ethics of algorithms: Mapping the debate. *Big Data & Society*, 3(2), 2053951716679679.
5. O'Neil, C. (2016). *Weapons of Math Destruction: How Big Data Increases Inequality and Threatens Democracy*. Crown Publishing Group.
6. Rhim, J., Lee, J. H., Chen, M., & Lim, A. (2021). A Deeper Look at Autonomous Vehicle Ethics: An Integrative Ethical Decision-Making Framework to Explain Moral Pluralism. *Frontiers in Robotics and AI*, 8. <https://doi.org/10.3389/frobt.2021.632394>
7. Whittaker, M., Crawford, K., Dobbe, R., Fried, G., Kaziunas, E., Mathur, V., ... & Schwartz, O. (2018). *AI now report 2018* (pp. 1-62). New York: AI Now Institute at New York University.

Chapter 3: Key Principles for Responsible AI Policies

In this chapter, we explore the key principles that underpin the development of responsible AI policies. These principles provide a framework for businesses to ensure that their AI systems align with ethical standards, legal requirements, and societal expectations.

We delve into the importance of transparency and explainability in AI algorithms, fairness and non-discrimination in decision-making, privacy and data protection, as well as accountability and responsibility throughout the AI development and use lifecycle.



KINDLY CONTACT THE
AUTHOR FOR A FULL
COPY OF THIS E-
BOOK

THE AUTHOR'S
DETAILS ARE
LOCATED AT THE
COPYRIGHT PAGE

Responsible Artificial Intelligence for Business and Government in Africa

"Responsible Artificial Intelligence for Business and Government in Africa" provides a comprehensive and practical guide for businesses and policymakers operating in Africa. It equips readers with the knowledge and tools to develop and implement responsible AI policies that uphold ethical standards, foster innovation, and contribute to the sustainable growth of organizations and the continent as a whole. A highlight of the book is the exploration of best practices for implementing responsible AI policies within organizations and institutions. It underscores the importance of establishing clear guidelines for AI development and deployment, implementing ethical review processes, conducting comprehensive employee training programs, and fostering collaborations with external experts and organizations.

Recognizing the challenges that may arise during AI policy implementation, the book dedicates a chapter to addressing common hurdles and providing strategies for overcoming them. Technical, cultural, and organizational challenges are explored, ensuring readers are equipped to navigate these obstacles effectively. Looking towards the future, the book discusses emerging trends and advancements in AI policy frameworks. It anticipates changes in the legal and regulatory landscapes and explores ethical considerations in emerging technologies, enabling readers to stay ahead of the curve.

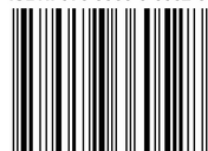
Prof. Richard Boateng is a Professor of Information Systems at the University of Ghana Business School. He is a technology researcher who focuses on developing, communicating, protecting, promoting ideas and concepts into sustainable projects of commercial value and development impact. He is the convenor of the Bright Research Group, which spearheads new perspectives in research into the digital economy of emerging economies. The Bright Research Group published two books with Springer and Taylor Francis in 2022.

The AD Scientific Index (Alper-Doger Scientific Index) 2021 and 2022 ranked Prof. Richard Boateng as the number one (#1) Scholar in ICT for Development/E-business Research in Ghana and 9th in Africa. He was also ranked the number four (#4) Scholar in General Business and Management Research in Ghana and 24th in Africa in 2022.

On three occasions, Prof. Boateng has been invited to contribute to global reports on the digital economy. First, by the Renowned Economist, Diane Coyle for the Vodafone Global PLC.'s Socio-economic Impact of Mobiles (SIM) Report; second, by the World Wide Web Foundation for the 2019 Women's Rights Online Survey; and third as a panelist at 2022 UNCTAD Global eCommerce Week, speaking on The AfCFTA and Data Governance Frameworks in Africa.

He is an avid songwriter and the co-founder of the contemporary Christian Music Band, Believe Over Hope. His music, spanning nine albums, four EPs and nineteen singles, is available on all the leading music streaming platforms including Apple Music, YouTube and Spotify.

ISBN: 978-9988-3-6052-8



9 789988 360528